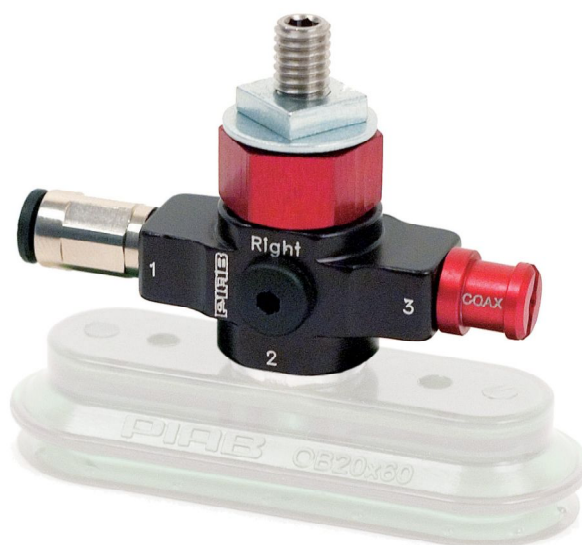


VGS™2010 family



Piab VGS™ – A product design where different suction cups are integrated with vacuum cartridges based on the patented COAX® technology. The “vacuum gripper” makes selection, sizing and installation of a vacuum system easier. With a VGS™ you will enjoy the benefits of a more cost-efficient and reliable decentralized vacuum system. It has a low weight at 25–39 g.

It is available with a two-stage COAX® cartridge MICRO. Choose Bi for low feed pressure, Si for high vacuum flow, Xi for extra vacuum and Ti at 0,4/0,6 MPa for extra capacity/dirt tolerance. This VGS™ is compatible with any suction cup with G1/8” male fitting.

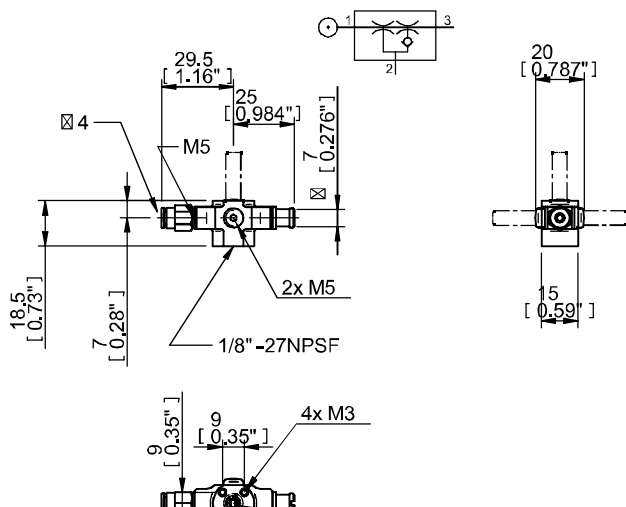
Vacuum flow

COAX® Cartridge	Feed pressure	Air consumption	Vacuum flow (NI/s) at different vacuum levels (-kPa)								Max vacuum
	MPa		0	10	20	30	40	50	60	70	-kPa
MICRO Bi03-2	0.4	0.09	0.25	0.15	0.08	0.07	0.05	0.03	—	—	60
MICRO Si02-2	0.5	0.10	0.27	0.19	0.09	0.08	0.07	0.05	0.02	—	70
MICRO Ti05-2	0.4	0.09	0.25	0.15	0.08	0.07	0.05	0.03	—	—	60
MICRO Ti05-2	0.5	0.10	0.27	0.19	0.09	0.08	0.07	0.05	0.02	—	70
MICRO Xi2.5-2	0.6	0.12	0.28	0.21	0.12	0.08	0.07	0.06	0.04	0.02	75

Evacuation times

COAX® Cartridge	Feed pressure	Air consumption	Evacuation time (s/l) to reach different vacuum levels (-kPa)								Max vacuum
	MPa		10	20	30	40	50	60	70	80	-kPa
MICRO Bi03-2	0.4	0.09	0.25	0.15	0.08	0.07	0.05	0.03	—	—	60
MICRO Si02-2	0.5	0.10	0.27	0.19	0.09	0.08	0.07	0.05	0.02	—	70
MICRO Ti05-2	0.4	0.09	0.25	0.15	0.08	0.07	0.05	0.03	—	—	60
MICRO Ti05-2	0.5	0.10	0.27	0.19	0.09	0.08	0.07	0.05	0.02	—	70
MICRO Xi2.5-2	0.6	0.12	0.28	0.21	0.12	0.08	0.07	0.06	0.04	0.02	75

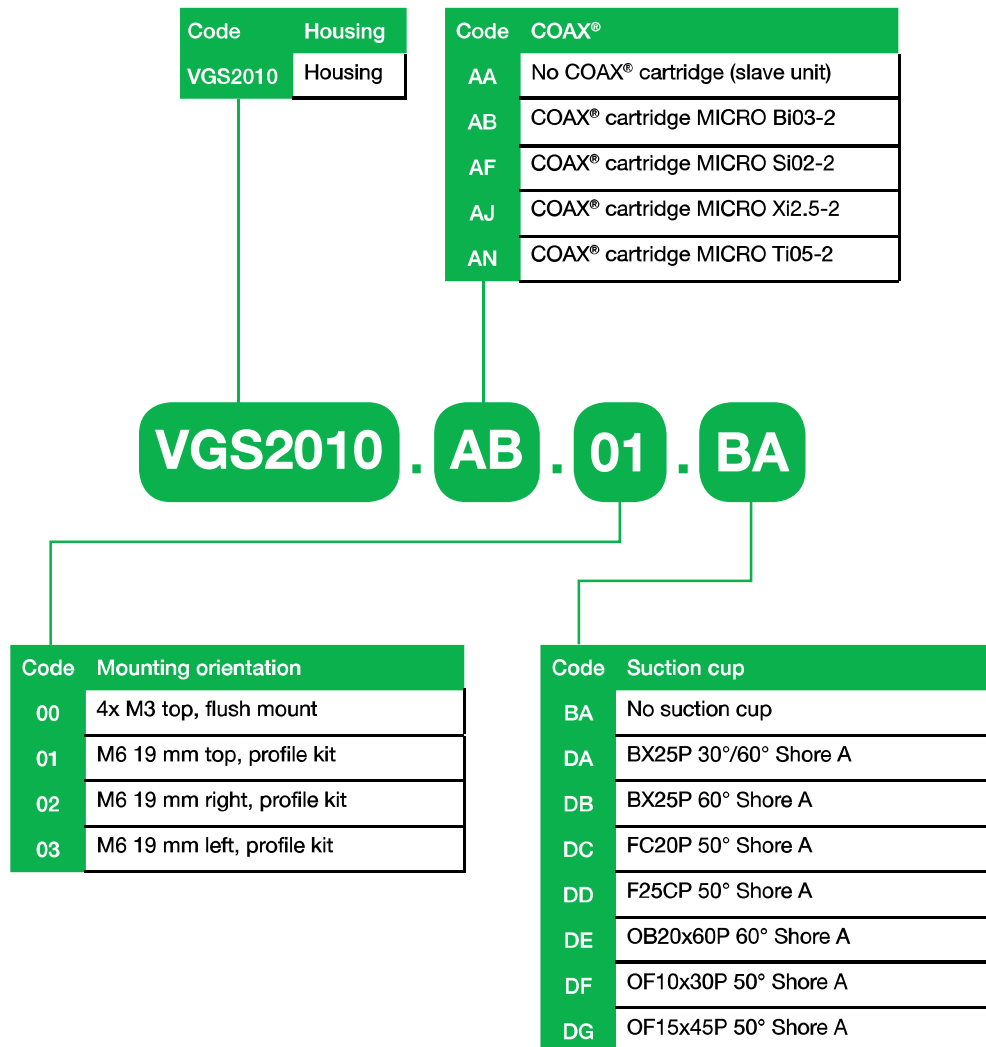
Dimensional drawing



Ordering information

For a complete list of available pumps and combinations with further information visit piab.com. On our webpage you will also be able to find dimensional drawings, CAD-drawings and much more. Register and get full access to all resources available.

VGS™ 2010 – Customer Code



VGS™3010 family



Piab VGS™ – A product design where different suction cups are integrated with vacuum cartridges based on the patented COAX® technology. The “vacuum gripper” makes selection, sizing and installation of a vacuum system easier. With a VGS™ you will enjoy the benefits of a more cost-efficient and reliable decentralized vacuum system. It has a low weight at 111–340 g.

It is available with two- or three-stage COAX® cartridge MINI. Choose a Di cartridge, for very harsh environments, combining high dust and high humidity levels, an Si cartridge for extra vacuum flow, a Pi cartridge for high performance at low feed pressure or an Xi cartridge when high flow and deep vacuum is needed. The three-stage cartridge will give extra high initial vacuum flow, which is suitable in high speed applications. The VGS™ is compatible with any suction cup with G3/8” male fitting.

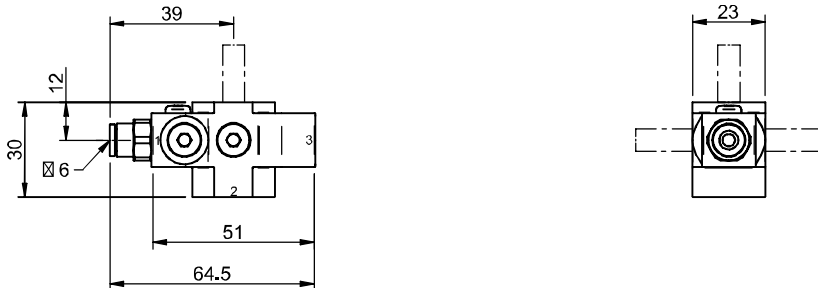
Vacuum flow

COAX® Cartridge	Feed pressure	Air consumption	Vacuum flow (NI/s) at different vacuum levels (-kPa)											Max vacuum
	MPa	NI/s	0	10	20	30	40	50	60	70	80	90	-kPa	
MINI Pi12-2	0.32	0.44	0.68	0.6	0.44	0.27	0.19	0.14	0.1	0.06	0.03	—	90	
MINI Pi12-3	0.32	0.44	1.4	0.6	0.44	0.27	0.19	0.14	0.1	0.06	0.03	—	90	
MINI Si08-2	0.6	0.44	0.77	0.67	0.51	0.33	0.23	0.16	0.12	0.08	—	—	75	
MINI Si08-3	0.6	0.44	1.34	0.73	0.55	0.35	0.23	0.17	0.13	0.08	—	—	75	
MINI Xi10-2	0.5	0.46	0.75	0.63	0.49	0.33	0.19	0.15	0.11	0.07	0.04	0.011	94	
MINI Xi10-3	0.5	0.46	1.43	0.7	0.5	0.33	0.19	0.15	0.11	0.07	0.04	0.011	94	
MINI Di16-2	0.6	0.75	0.64	0.57	0.49	0.41	0.35	0.29	0.18	0.04	—	—	73	

Evacuation times

COAX® Cartridge	Feed pressure	Air consumption	Evacuation time (s/l) to reach different vacuum levels (-kPa)										Max vacuum
	MPa	NI/s	10	20	30	40	50	60	70	80	90	-kPa	
MINI Pi12-2	0.32	0.44	0.17	0.32	0.58	1.1	1.8	2.7	4.0	6.4	—	90	
MINI Pi12-3	0.32	0.44	0.08	0.23	0.49	1	1.7	2.6	3.9	6.3	—	90	
MINI Si08-2	0.6	0.44	0.14	0.31	0.55	0.9	1.4	2.1	3.1	—	—	75	
MINI Si08-3	0.6	0.44	0.1	0.25	0.48	0.8	1.3	2	2.9	—	—	75	
MINI Xi10-2	0.5	0.46	0.14	0.3	0.6	1	1.6	2.3	3.5	5.3	8.9	94	
MINI Xi10-3	0.5	0.46	0.09	0.26	0.5	0.9	1.5	2.2	3.4	5.2	8.8	94	
MINI Di16-2	0.6	0.75	0.17	0.35	0.58	0.84	1.15	1.58	2.49	—	—	73	

Dimensional drawing



Ordering information

For a complete list of available pumps and combinations with further information visit piab.com. On our webpage you will also be able to find dimensional drawings, CAD-drawings and much more. Register and get full access to all resources available.

VGS™3010 – Customer Code

Code	Housing
VGS3010	Housing

Code	COAX®
AA	No COAX® cartridge (slave unit)
AB	MINI Pi12-2
AC	MINI Pi12-3
AD	MINI Pi12-2, non-return valve
AE	MINI Pi12-3, non-return valve
AF	MINI Si08-2
AG	MINI Si08-3
AH	MINI Si08-2, non-return valve
AI	MINI Si08-3, non-return valve
AJ	MINI Xi10-2
AK	MINI Xi10-3
AL	MINI Xi10-2, non-return valve
AM	MINI Xi10-3, non-return valve
AN	MINI Di16-2

Code	Mounting orientation
00	4x M4 top, flush mount
01	M8 16 mm top
02	M8 16 mm right
03	M8 16 mm left
04	M8 27 mm top, profile kit
05	M8 27 mm right, profile kit
06	M8 27 mm left, profile kit
07	M6 22 mm top, profile kit
08	M6 22 mm right, profile kit
09	M6 22 mm left, profile kit
11	Ball joint VGS™3010 right
12	Ball joint VGS™3010 left
13	Lock-pin VGS™3010 right
14	Lock-pin VGS™3010 left
15	Level compensator LC30

VGS3010

AB

01

38

Suction cup

Visit piab.com for the full range of suction cups available for VGS™3010

VGS™3040 family



This is a product design where different suction cups can be integrated with vacuum cartridges based on the patented COAX® technology. The “vacuum gripper” makes selection, sizing and installation of a vacuum system easier. With a VGS™ you will enjoy the benefits of a more cost-efficient and reliable decentralized vacuum system. The VGS™ is compatible with any suction cup with G3/8” male fitting. It has a low weight at 204–340 g.

It is available with two- or three-stage COAX® cartridge MINI. Choose a Di cartridge, for very harsh environments, combining high dust and high humidity levels, an Si cartridge for extra vacuum flow, a Pi cartridge for high performance at low feed pressure or an Xi cartridge when high flow and deep vacuum is needed. The three-stage cartridge will give extra high initial vacuum flow, which is suitable in high speed applications.

It is available in lockpin 16, 19 or balljoint mountings, industry standard as well as level compensator to compensate for differences in level of object. It can also be fitted with different functions as energy saving, release or blow off.

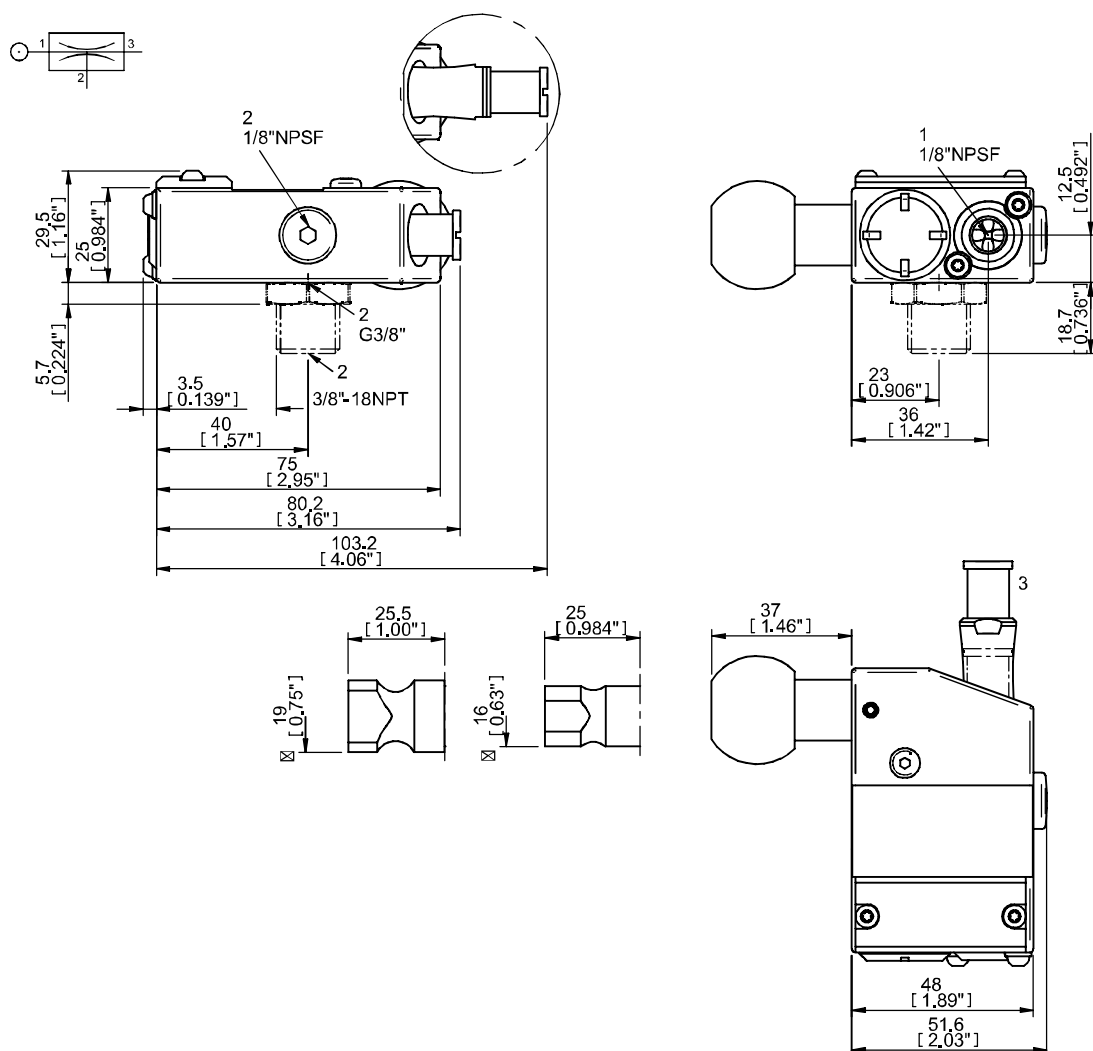
Vacuum flow

COAX® Cartridge	Feed pressure	Air consumption	Vacuum flow (NI/s) at different vacuum levels (-kPa)										Max vacuum
	MPa	NI/s	0	10	20	30	40	50	60	70	80	90	-kPa
MINI Si08-2	0.6	0.44	0.77	0.67	0.51	0.33	0.23	0.16	0.12	0.08	—	—	75
MINI Si08-3	0.6	0.44	1.34	0.73	0.55	0.35	0.23	0.17	0.13	0.08	—	—	75
MINI Xi10-2	0.5	0.46	0.75	0.63	0.49	0.33	0.19	0.15	0.11	0.07	0.045	0.011	94
MINI Xi10-3	0.5	0.46	1.43	0.7	0.5	0.33	0.19	0.15	0.11	0.07	0.045	0.011	94
MINI Pi12-2	0.32	0.44	0.68	0.6	0.44	0.27	0.19	0.14	0.1	0.06	0.03	—	90
MINI Pi12-3	0.32	0.44	1.4	0.6	0.44	0.27	0.19	0.14	0.1	0.06	0.03	—	90

Evacuation times

COAX® Cartridge	Feed pressure	Air consumption	Evacuation time (s/l) to reach different vacuum levels (-kPa)										Max vacuum
	MPa	NI/s	10	20	30	40	50	60	70	80	90	-kPa	
MINI Si08-2	0.6	0.44	0.14	0.31	0.55	0.9	1.4	2.1	3.1	—	—	75	
MINI Si08-3	0.6	0.44	0.1	0.25	0.48	0.8	1.3	2	2.9	—	—	75	
MINI Xi10-2	0.5	0.46	0.14	0.3	0.6	1	1.6	2.3	3.5	5.3	8.9	94	
MINI Xi10-3	0.5	0.46	0.09	0.26	0.5	0.9	1.5	2.2	3.4	5.2	8.8	94	
MINI Pi12-2	0.32	0.44	0.17	0.32	0.58	1.1	1.8	2.7	4	6.4	—	90	
MINI Pi12-3	0.32	0.44	0.08	0.23	0.49	1	1.7	2.6	3.9	6.3	—	90	

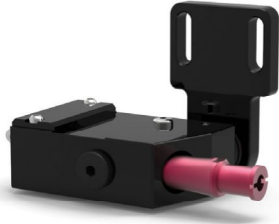
Dimensional drawing



Ordering information

For a complete list of available pumps and combinations with further information visit piab.com. On our webpage you will also be able to find dimensional drawings, CAD-drawings and much more. Register and get full access to all resources available.

Accessory descriptions



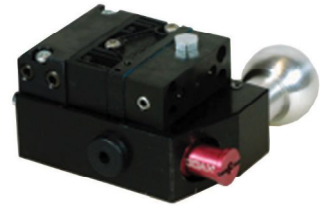
VGS™3040 with profile mount

It makes the attachment easy to a standard extrusion and profile systems with an adjustable position. This will give a quick setup and changeover.



VGS™3040 with level compensator

It is available with level compensator to compensate for differences in level of object.



VGS™3040 with piSAVE onoff

It has an integrated energy-saving device, piSAVE onoff, results in very low air consumption in sealed applications. The built-in blow off check valve will provide a fast release of the object. It has an adjustable vacuum controlled 2/2 NO valve and is available with large hysteresis for object handling and small hysteresis for process applications.



VGS™3040 with piSAVE release

It has a built-in quick release for fast release of object. It works with an internal or separate feed of air. It equalises pressure in the suction cups to provide fast release of the product. The piSAVE release will provide an extra fast release by accumulating and utilising the feed-air pressure as a boost. It has an ON/OFF activated simultaneously with the ejector and no additional controls required — use a single 3/2 control valve for the ejector and piSAVE release.



VGS™3040 with blow off

It has a built-in blow off check valve for fast release of object. Prevents vacuum from being pulled through the blow-off lines, which means faster response time and completely independent vacuum units.

VGS™3040 – Customer Code

Code	Housing
VGS3040	Housing

Code	COAX® cartridge
AB	COAX® cartridge MINI Pi12-2
AC	COAX® cartridge MINI Pi12-3
AD	COAX® cartridge MINI Pi12-2, non-return valve
AE	COAX® cartridge MINI Pi12-3, non-return valve
AF	COAX® cartridge MINI Si08-2
AG	COAX® cartridge MINI Si08-3
AH	COAX® cartridge MINI Si08-2, non-return valve
AI	COAX® cartridge MINI Si08-3, non-return valve
AJ	COAX® cartridge MINI Xi10-2
AK	COAX® cartridge MINI Xi10-3
AL	COAX® cartridge MINI Xi10-2, non-return valve
AM	COAX® cartridge MINI Xi10-3, non-return valve

Code	Mounting style
00	No mounting style
01	Mounting Lock pin 16 mm
02	Mounting Lock pin 19 mm
03	Mounting Ball joint
04	Mounting Lock pin 16 mm level compensator
05	Mounting Lock pin 19 mm level compensator
06	Mounting Ball joint level compensator
07	Mounting Extrusion mount level compensator
08	Mounting Profile mount
09	Mounting Profile mount

VGS3040 . AB . 01 . AA . 01 . AA

Code	Energy saving
AA	No energy saving
AB	piSAVE onoff 65 -kPa
AC	piSAVE onoff, Adjustable (factory set at 45 -kPa)

Code	Release function
01	Release Blow-off
02	piSAVE release internal
03	piSAVE release external

Code	Vacuum connection
AA	G3/8" female
AB	G3/8" male - 3/8" NPT male adapter

VGS™5010 family



Piab VGS™ – A product design where different suction cups are integrated with vacuum cartridges based on the patented COAX® technology. The “vacuum gripper” makes selection, sizing and installation of a vacuum system easier. With a VGS™ you will enjoy the benefits of a more cost-efficient and reliable decentralized vacuum system. It has a low weight at 413–679 g.

The VGS™5010 is specially designed for handling larger parts, such as car body sheets as it is compatible with any suction cup with G1/2” male fitting. It is also available with a two or three-stage COAX® cartridge MIDI. Choose an Si cartridge for extra vacuum flow, a Pi cartridge for high performance at low feed pressure or an Xi cartridge when high flow and deep vacuum is needed. The three-stage cartridge will give extra high initial vacuum flow, suitable in high speed applications.

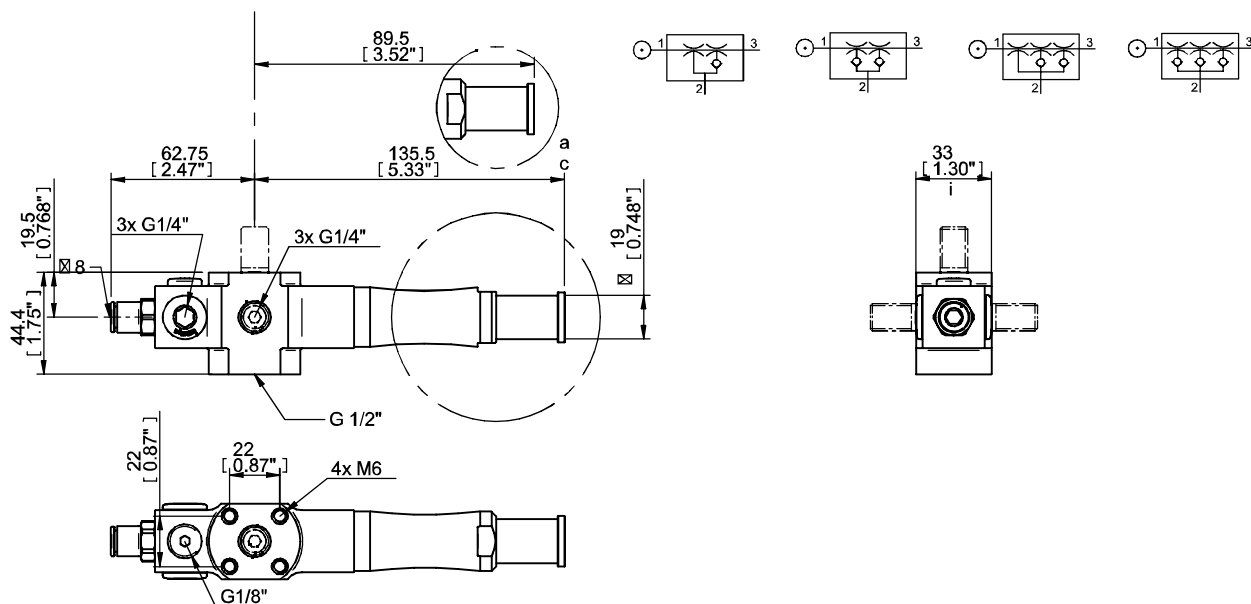
Vacuum flow

COAX® Cartridge	Feed pressure	Air consumption	Vacuum flow (NI/s) at different vacuum levels (-kPa)											Max vacuum
	MPa	NI/s	0	10	20	30	40	50	60	70	80	90	-kPa	
MIDI Pi48-2	0.31	2	2.8	2.5	1.8	1.1	0.65	0.5	0.35	0.25	0.1	—	90	
MIDI Pi48-3	0.31	2.05	5.6	2.5	1.8	1.1	0.65	0.5	0.35	0.25	0.1	—	90	
MIDI Si32-2	0.6	1.75	3.3	3	2.6	1.7	0.9	0.6	0.5	0.35	—	—	75	
MIDI Si32-3	0.6	1.75	6	3.5	2.6	1.7	0.9	0.6	0.5	0.35	—	—	75	
MIDI Xi40-2	0.45	1.83	2.8	2.3	1.6	1	0.73	0.58	0.43	0.32	0.18	0.03	95	
MIDI Xi40-3	0.45	1.83	5.9	3	2	1.3	0.73	0.58	0.43	0.32	0.18	0.03	95	

Evacuation times

COAX® Cartridge	Feed pressure	Air consumption	Evacuation time (s/l) to reach different vacuum levels (-kPa)										Max vacuum
	MPa	NI/s	10	20	30	40	50	60	70	80	90	-kPa	
MIDI Pi48-2	0.31	2	0.03	0.07	0.13	0.26	0.46	0.7	1	1.6	4	90	
MIDI Pi48-3	0.31	2.05	0.02	0.06	0.12	0.25	0.45	0.7	1	1.6	4	90	
MIDI Si32-2	0.6	1.75	0.03	0.07	0.1	0.18	0.33	0.53	0.8	—	—	75	
MIDI Si32-3	0.6	1.75	0.02	0.05	0.1	0.18	0.33	0.53	0.8	—	—	75	
MIDI Xi40-2	0.45	1.83	0.04	0.09	0.17	0.28	0.44	0.63	0.9	1.3	2.3	95	
MIDI Xi40-3	0.45	1.83	0.022	0.062	0.12	0.22	0.37	0.57	0.84	1.2	2.2	95	

Dimensional drawing



Ordering information

For a complete list of available pumps and combinations with further information visit piab.com. On our webpage you will also be able to find dimensional drawings, CAD-drawings and much more. Register and get full access to all resources available.

VGS™5010 – Customer Code

Code	Housing
VGS5010	Housing

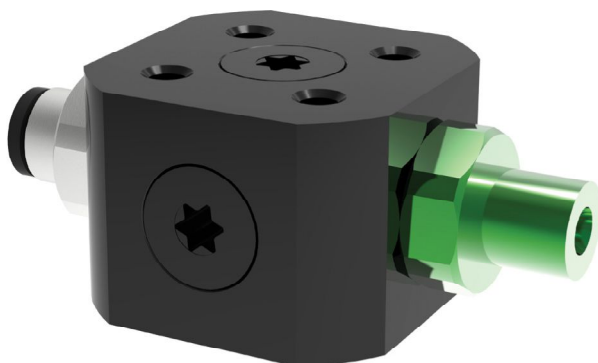
Code	COAX® cartridge
AA	No COAX® cartridge (slave unit)
AB	COAX® cartridge MIDI Pi48-2
AC	COAX® cartridge MIDI Pi48-3
AD	COAX® cartridge MIDI Pi48-2, non-return valve
AE	COAX® cartridge MIDI Pi48-3, non-return valve
AF	COAX® cartridge MIDI Si32-2
AG	COAX® cartridge MIDI Si32-3
AH	COAX® cartridge MIDI Si32-2, non-return valve
AI	COAX® cartridge MIDI Si32-3, non-return valve
AJ	COAX® cartridge MIDI Xi40-2
AK	COAX® cartridge MIDI Xi40-3
AL	COAX® cartridge MIDI Xi40-2, non-return valve
AM	COAX® cartridge MIDI Xi40-3, non-return valve

Code	Mounting style
00	4x M6 top, flush mount
01	4x M6 top, angle bracket
02	M12 20 mm top
03	M12 20 mm right
04	M12 20 mm left
05	M12 20 mm top, angle bracket
06	M12 20 mm right, angle bracket
07	M12 20 mm left, angle bracket

VGS5010 . AB . 00 . BA

Code	Suction cup
BA	No suction cup
CO	BF110P 30°/60° Shore A
CP	BF110P 60° Shore A
CQ	BX110P 30°/60° Shore A
CR	BX110P 60° Shore A
CS	F110P 30°/60° Shore A
CT	F110P 60° Shore A
CU	OB65x170P 30°/60° Shore A
CV	OB65x170P 60° Shore A
CX	BL50-3P 30°/70° Shore A
CY	BX75P 30°/60° Shore A
CZ	BX75P 60° Shore A

COAX® in piGRIP®



This is a fully decentralized vacuum unit based on patented COAX® technology. It provides the quickest response time and very high energy efficiency. The COAX® in piGRIP® is available with a variation of two stage COAX® MICRO cartridges. The COAX® in piGRIP® is compatible with any suction cup with G1/8" male fitting.

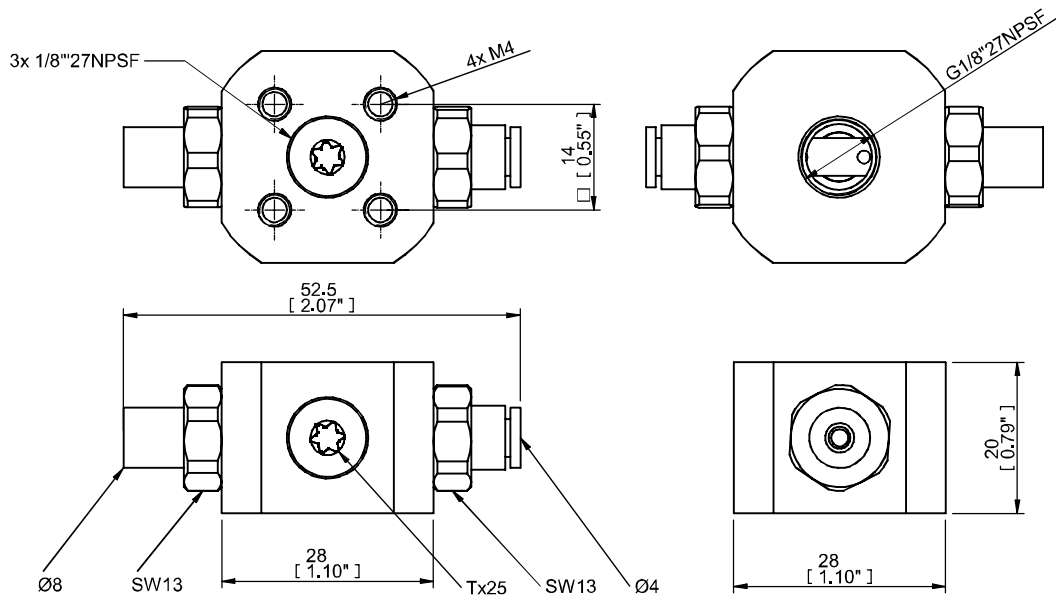
Vacuum flow

COAX® Cartridge	Feed pressure	Air consumption	Vacuum flow (NI/s) at different vacuum levels (-kPa)										Max vacuum
	MPa	NI/s	0	10	20	30	40	50	60	70	80	-kPa	
MICRO Bi03-2	0.18	0.14	0.23	0.15	0.06	0.04	0.035	0.023	0.013	0.006	—	83	
MICRO Si02-2	0.6	0.12	0.28	0.21	0.12	0.08	0.07	0.06	0.04	0.02	—	75	
MICRO Ti05-2	0.4	0.27	0.32	0.28	0.23	0.17	0.1	0.07	0.04	0.02	0.004	84	
MICRO Xi2.5-2	0.5	0.13	0.24	0.17	0.1	0.06	0.04	0.03	0.02	0.01	0.01	92	

Evacuation times

COAX® Cartridge	Feed pressure	Air consumption	Evacuation time (s/l) to reach different vacuum levels (-kPa)									Max vacuum
	MPa	NI/s	10	20	30	40	50	60	70	80	-kPa	
MICRO Bi03-2	0.18	0.14	0.5	1.4	3.9	6.4	10	16	28	51	83	
MICRO Si02-2	0.6	0.12	0.41	1.01	2.01	3.3	4.9	6.9	10.2	—	75	
MICRO Ti05-2	0.4	0.27	0.33	0.73	1.2	2	3.1	5	8.3	16.6	84	
MICRO Xi2.5-2	0.5	0.13	0.49	1.23	2.48	4.5	7.3	11.3	18	28	92	

Dimensional drawing



Ordering information

For a complete list of available pumps and combinations with further information visit piab.com. On our webpage you will also be able to find dimensional drawings, CAD-drawings and much more. Register and get full access to all resources available.

VGS™2010



- ▶ Patented COAX® technology.
- ▶ Compatible with any suction cup with G1/8" male fitting. Suction cup ordered separately.
- ▶ Available with a two-stage COAX® cartridge MICRO. Configurable to your specific needs. Choose Bi for low feed pressure, Si for high vacuum flow, Xi for extra vacuum and Ti at 0.4/0.6 MPa for extra capacity/dirt tolerance.

Technical data

Description	Unit	Value
Feed pressure, max.	MPa	0.7
Noise level	dBA	55–61
Temperature range	°C	-10–80
Material		Al, SS, NBR, TPE, PA

For more technical information about the COAX® cartridges, please go to the data sheet for the COAX® cartridge MICRO.

Vacuum flow

COAX® cartridge	Feed pressure* MPa	Air consumption NI/s	Vacuum flow (NI/s) at different vacuum levels (-kPa)									Max vacuum -kPa
			0	10	20	30	40	50	60	70	80	
Bi	0.18	0.14	0.23	0.15	0.060	0.040	0.035	0.023	0.013	0.006	—	83
Si	0.6	0.12	0.28	0.21	0.12	0.08	0.07	0.06	0.04	0.02	—	75
Xi	0.5	0.13	0.24	0.17	0.10	0.06	0.04	0.03	0.02	0.01	0.01	92
Ti	0.4	0.27	0.32	0.28	0.23	0.17	0.10	0.07	0.04	0.02	0.004	84
Ti	0.6	0.37	0.31	0.27	0.24	0.20	0.15	0.09	0.04	0.01	—	75

For vacuum flows at other feed pressures, see COAX® cartridge data sheets. *Feed pressure tolerance, +/- 0.01 MPa.

Evacuation time

COAX® cartridge	Feed pressure* MPa	Air consumption NI/s	Evacuation time (s/l) to reach different vacuum levels (-kPa)								Max vacuum -kPa
			10	20	30	40	50	60	70	80	
Bi	0.18	0.14	0.50	1.40	3.90	6.40	10.0	16.0	28.0	51.0	83
Si	0.6	0.12	0.41	1.01	2.01	3.30	4.90	6.90	10.2	—	75
Xi	0.5	0.13	0.49	1.23	2.48	4.50	7.30	11.3	18.0	28.0	92
Ti	0.4	0.27	0.33	0.73	1.20	2.00	3.10	5.00	8.30	16.6	84
Ti	0.6	0.37	0.30	0.70	1.20	1.80	2.60	4.20	8.43	—	75

For evacuation times at other feed pressures, see COAX® cartridge data sheets. *Feed pressure tolerance, +/- 0.01 MPa.

Combined pump and gripper Small

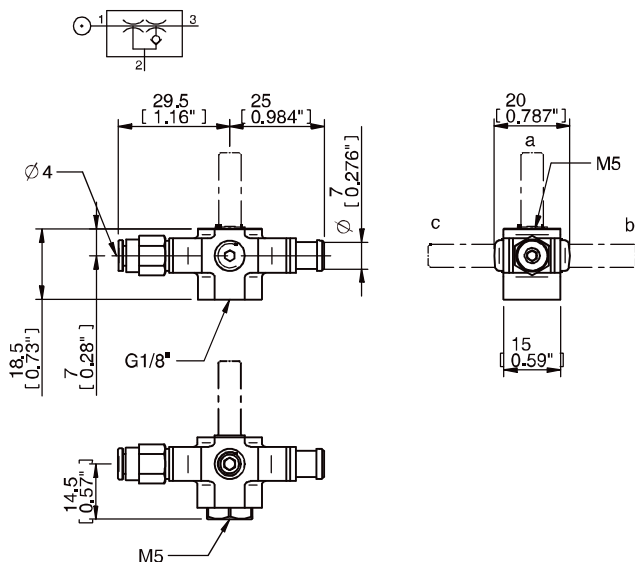


Ordering information

1. Select housing		VGS™2010 code
Housing		VGS2010
2. Select COAX® cartridge module		VGS™2010 code
No COAX® cartridge (slave unit)		AA
COAX® cartridge MICRO Bi03-2		AB
COAX® cartridge MICRO Si02-2		AF
COAX® cartridge MICRO Xi2.5-2		AJ
COAX® cartridge MICRO Ti05-2		AN
3. Select mounting/orientation		VGS™2010 code
4x M3 top, flush mount		00
a	M6 19 mm top, profile kit	01
b	M6 19 mm right, profile kit	02
c	M6 19 mm left, profile kit	03
4. Select suction cup with fitting*		VGS™2010 code
No suction cup		BA

*Suction cup ordered separately.

Example	Ordering number
VGS™2010 – Bi03-2, M6 19 mm top, profile kit, no suction cup	VGS2010.AB.01.BA



COAX® in piGRIP®



- ▶ Fully decentralized vacuum unit based on patented COAX® technology.
- ▶ Quickest response time and very high energy efficiency.
- ▶ Easy system dimensioning – small risk for mistakes.
- ▶ Available with a variation of two-stage COAX® MICRO cartridges.
- ▶ Suitable for high vacuum flow.
- ▶ Suitable for extra capacity/dirt tolerance.

Technical data

Description	Unit	Value
Feed pressure, max.	MPa	0.7
Noise level	dBA	55–61
Temperature range	°C	-10–80
Weight	g	45
Material		Al, PA, NBR, CuZn
Connection, Feed pressure (oD)	mm	Ø4
Connection, Vacuum	inch	G1/8"
Connection, Exhaust (iD)	mm	Ø8

Vacuum flow

COAX® cartridge	Feed pressure* MPa	Air consumption NI/s	Vacuum flow (NI/s) at different vacuum levels (-kPa)									Max vacuum -kPa
			0	10	20	30	40	50	60	70	80	
Bi	0.18	0.14	0.23	0.15	0.060	0.040	0.035	0.023	0.013	0.0060	—	83
Si	0.6	0.12	0.28	0.21	0.12	0.08	0.07	0.06	0.04	0.02	—	75
Xi	0.5	0.13	0.24	0.17	0.10	0.06	0.04	0.03	0.02	0.01	0.01	92
Ti	0.4	0.27	0.32	0.28	0.23	0.17	0.10	0.07	0.04	0.02	0.004	84
Ti	0.6	0.37	0.31	0.27	0.24	0.20	0.15	0.09	0.04	0.01	—	75

For vacuum flows at other feed pressures, see COAX® cartridge data sheets. *Feed pressure tolerance, +/- 0.01 MPa

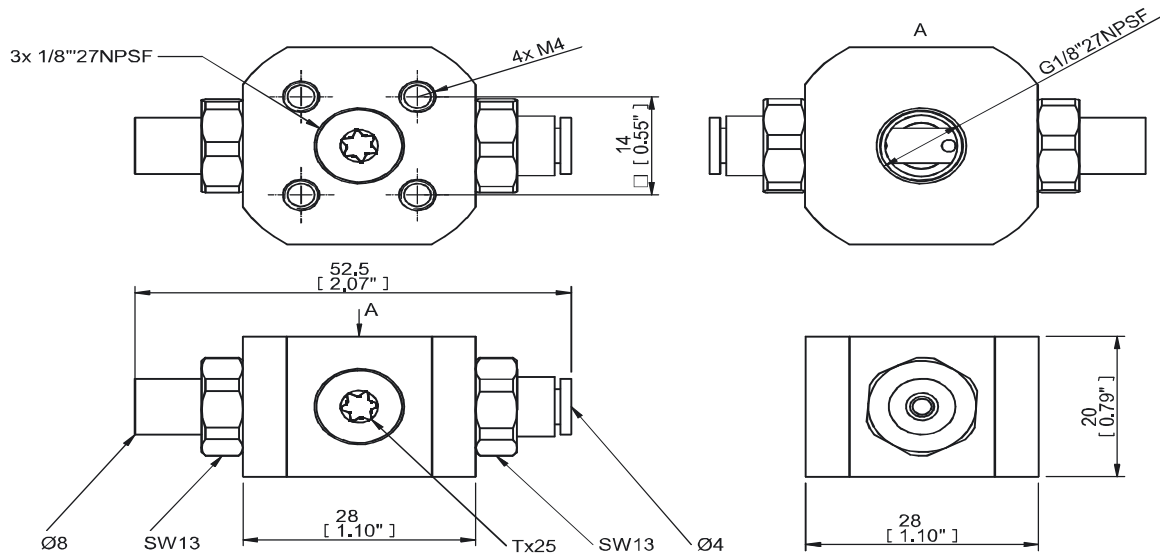
Evacuation time

COAX® cartridge	Feed pressure* MPa	Air consumption NI/s	Evacuation time (s/l) to reach different vacuum levels (-kPa)								Max vacuum -kPa
			10	20	30	40	50	60	70	80	
Bi	0.18	0.14	0.50	1.4	3.9	6.4	10.0	16.0	28.0	51.0	83
Si	0.6	0.12	0.41	1.01	2.01	3.30	4.90	6.90	10.2	—	75
Xi	0.5	0.13	0.49	1.23	2.48	4.50	7.30	11.3	18.0	28.0	92
Ti	0.4	0.27	0.33	0.73	1.20	2.00	3.10	5.00	8.30	16.6	84
Ti	0.6	0.37	0.30	0.70	1.20	1.80	2.60	4.20	8.43	—	75

For evacuation times at other feed pressures, see COAX® cartridge data sheets. *Feed pressure tolerance, +/- 0.01 MPa

Ordering information

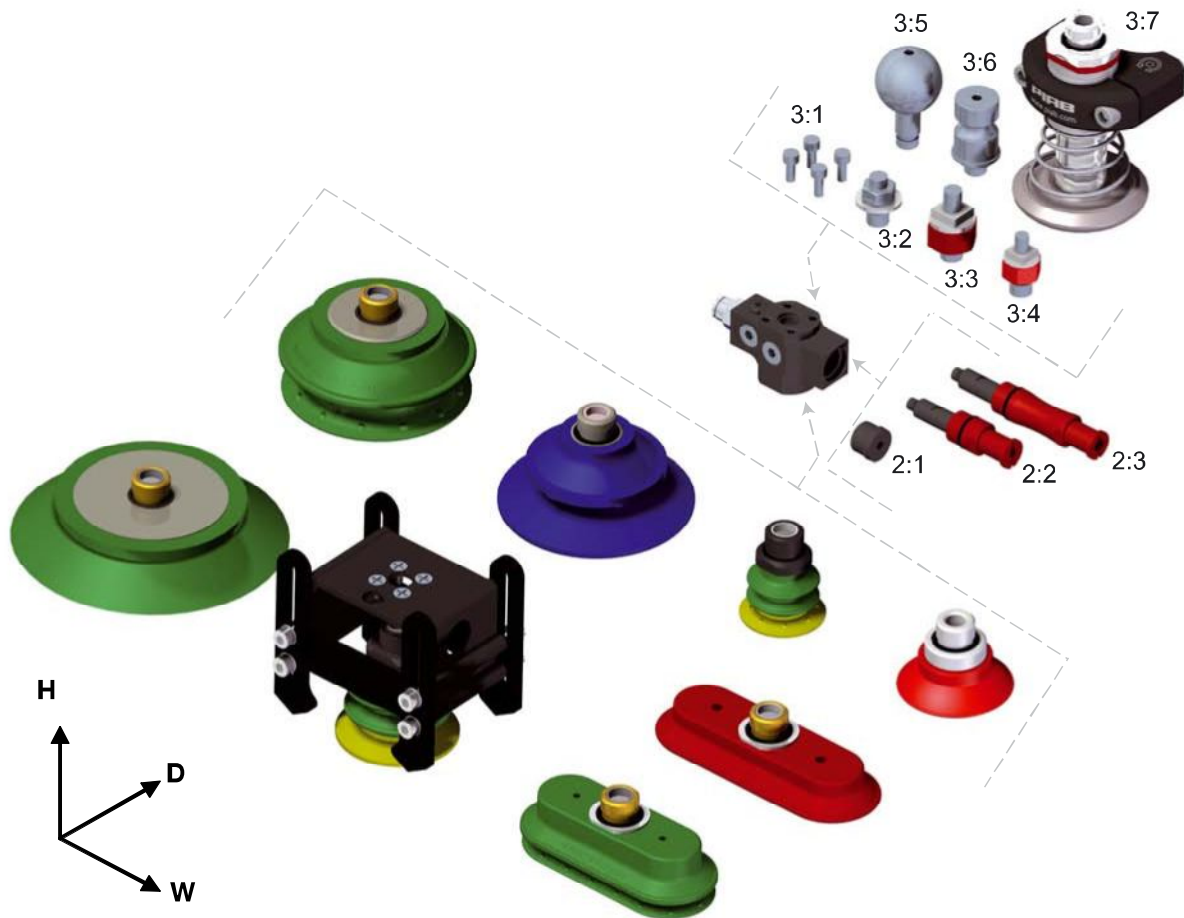
Description	Art. No.
COAX® in piGRIP® Xi	0200344
COAX® in piGRIP® Si	0200345
COAX® in piGRIP® Ti	0200346
COAX® in piGRIP® Bi	0201096



Ordering information, accessories

Description	Art. No.
Mounting kit 4xM4 VGS3010	0106915
Mounting kit M8/16 VGS3010	0106927
Mounting kit M8/27 04 VGS3010	0106949
Mounting kit M6/22 07 top VGS3010	0108488

VGS™3010



Dimension and connection			W mm	D mm	H mm	Feed pressure	Vacuum	Exhaust/blow
1	Housing	VGS3010		23	30	Ø6 mm, 3x G1/8", M5		
2	COAX® cartridge	2:1 No COAX® cartridge	65					
		2:2 COAX® cartridge 2-stage	88					Ø11 mm
		2:3 COAX® cartridge 3-stage	111					Ø11 mm
3	Mounting / orientation	3:1 4 x M4 top, flush mount					2x G1/8"	
		3:2 M8 16 mm		16	16		2x G1/8"	
		3:3 M8 27 mm, profile kit		27	27		2x G1/8"	
		3:4 M6 22 mm, profile kit		22	22		2x G1/8"	
		3:5 Ball joint		40			2x G1/8"	
		3:6 Lock-pin 19 mm		32			2x G1/8"	
		3:7 Level compensator LC30	a	a	81		3x G1/8"	
4	Suction cup	No suction cup	b	b	b		G3/8"	
		Suction cup	b	b	b			

For complete dimensions add the measurements from all selected modules or visit www.piab.com and download your configuration in the CAD download centre.

^a For complete dimensions, configure your CAD model at www.piab.com

^b For suction cup dimensions see suction cup data sheet.

Combined pump and gripper Medium






Technical data

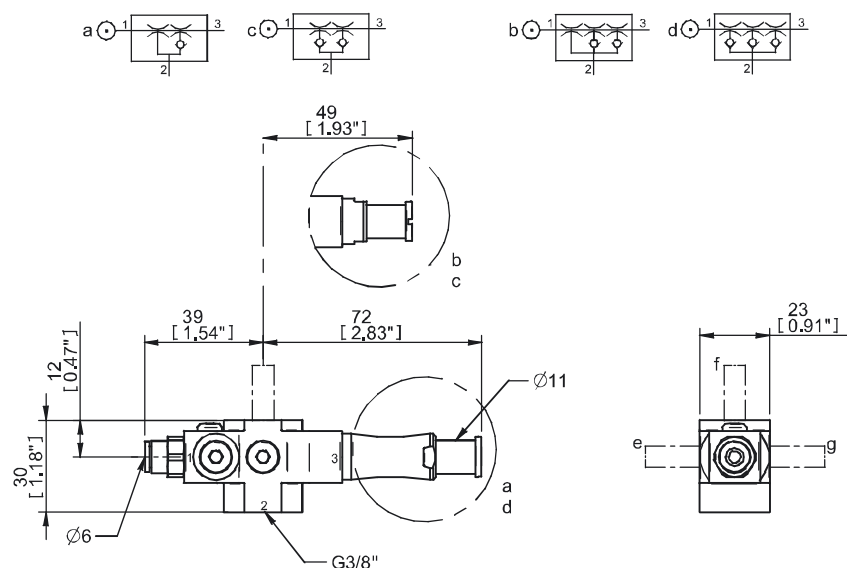
Description	Unit	Value
Feed pressure, max.	MPa	0.7
Noise level	dBA	60–74
Temperature range	°C	10–50
Material		PP, PA, NBR, AL, SS, PU

For more technical information about the COAX® cartridges, please go to the data sheet for the COAX® cartridge MINI.

Ordering information

1. Select housing					VGS™3010 code
Housing					VGS3010
	2. Select COAX® cartridge module	Initial flow NI/s	Evacuation time to reach 60 -kPa s/l	COAX® cartridge	VGS™3010 code
				No COAX® cartridge (slave unit)	AA
a		0.68	2.7	COAX® cartridge MINI Pi12-2	AB
c		0.68	2.7	COAX® cartridge MINI Pi12-2, non-return valve	AD
b		1.4	2.6	COAX® cartridge MINI Pi12-3	AC
d		1.4	2.6	COAX® cartridge MINI Pi12-3, non-return valve	AE
a		0.77	2.1	COAX® cartridge MINI Si08-2	AF
c		0.77	2.1	COAX® cartridge MINI Si08-2, non-return valve	AH
b		1.34	2.0	COAX® cartridge MINI Si08-3	AG
d		1.34	2.0	COAX® cartridge MINI Si08-3, non-return valve	AI
a		0.75	2.3	COAX® cartridge MINI Xi10-2	AJ
c		0.75	2.3	COAX® cartridge MINI Xi10-2, non-return valve	AL
b		1.43	2.2	COAX® cartridge MINI Xi10-3	AK
d		1.43	2.2	COAX® cartridge MINI Xi10-3, non-return valve	AM
	3. Select mounting/orientation				VGS™3010 code
	4x M4 top, flush mount				00
f	M8 16 mm top				01
g	M8 16 mm right				02
e	M8 16 mm left				03
f	M8 27 mm top, profile kit				04
g	M8 27 mm right, profile kit				05
e	M8 27 mm left, profile kit				06
f	M6 22 mm top, profile kit				07
g	M6 22 mm right, profile kit				08
e	M6 22 mm left, profile kit				09
g	Ball joint VGS™3010 right				11
e	Ball joint VGS™3010 left				12
g	Lock-pin VGS™3010, right				13
e	Lock-pin VGS™3010, left				14
	Level compensator LC30				15

4. Select suction cup with fitting	VGS™3010 code
No suction cup	BA
B75P 30°/60° Shore A	BB
B75P 60° Shore A	BC
BF80P 30°/50° Shore A	BD
BF80P 60° Shore A	BE
BF110P 30°/60° Shore A	CO
BF110P 60° Shore A	CP
BL30-3P 30°/70° Shore A	CS
BL40-3P 30°/70° Shore A	CT
BL40-4 Silicone	CU
BL40-5 Silicone	CV
BX35P 30°/60° Shore A	BF
BX35P 60° Shore A	BG
BX52P 30°/60° Shore A	BH
BX52P 60° Shore A	BI
BX75P 30°/60° Shore A	BJ
BX75P 60° Shore A	BK
BX110P 30°/60° Shore A	CQ
BX110P 60° Shore A	CR
F75P 30°/60° Shore A	BL
F75P 60° Shore A	BM
F110P 30°/60° Shore A	BN
F110P 60° Shore A	BO
FC50P 40° Shore A	BP
FC50P 60° Shore A	BQ
FC75P 40° Shore A	BR
FC75P 60° Shore A	BS
FC100P 40° Shore A	BT
FC100P 60° Shore A	BU
OB35X90P PU30°/60° Shore A	CA
OB35X90P PU60° Shore A	CB
OB50X140P PU30°/60° Shore A	CC
OB50X140P PU60° Shore A	CD
OB65X170P PU30°/60° Shore A	CE
OB65X170P PU60° Shore A	CF
OBL40x90P 70° Shore A	BV
OF25X70P PU40° Shore A	CG
OF25X70P PU60° Shore A	CH
OF40X110P PU40° Shore A	CI
OF40X110P PU60° Shore A	CJ
OF55X150P PU40° Shore A	CK
OF55X150P PU60° Shore A	CL
OF70X175P PU40° Shore A	CM
OF70X175P PU60° Shore A	CN
Example	Ordering number
VGS™3010 B75P – Pi12-3, M8 27 mm top including profile kit, B75P 30/60° Shore A	VGS3010.AC.04.BB



VGS™3040



- ▶ COAX® cartridge integrated.
- ▶ Available in lock pin 16, 19 or ball joint mountings, industry standard.
- ▶ Available with level compensator to compensate for differences in level of object.

Technical data

Description	Unit	Value
Feed pressure, max.	MPa	0.7
Noise level, range	dBA	65-74
Material		Al, NBR, PA, Steel
Temperature range	°C	-10-80
Weight, range	g	204-264

Vacuum flow

COAX® cartridge	Feed pressure MPa	Air consumption NI/s	Vacuum flow (NI/s) at different vacuum levels (-kPa)											Max vacuum
			0	10	20	30	40	50	60	70	80	90	-kPa	
Si08-2	0.60	0.44	0.77	0.67	0.51	0.33	0.23	0.16	0.12	0.08	—	—	75	
Si08-3	0.60	0.44	1.34	0.73	0.55	0.35	0.23	0.17	0.13	0.08	—	—	75	
Xi10-2	0.50	0.46	0.75	0.63	0.49	0.33	0.19	0.15	0.11	0.07	0.05	0.011	94	
Xi10-3	0.50	0.46	1.43	0.70	0.50	0.33	0.19	0.15	0.11	0.07	0.05	0.011	94	
Pi12-2	0.314	0.44	0.68	0.60	0.44	0.27	0.19	0.14	0.10	0.06	0.03	—	90	
Pi12-3	0.314	0.44	1.40	0.60	0.44	0.27	0.19	0.14	0.10	0.06	0.03	—	90	

Evacuation time

COAX® cartridge	Feed pressure MPa	Air consumption NI/s	Evacuation time (s/l) to reach different vacuum levels (-kPa)										Max vacuum
			10	20	30	40	50	60	70	80	90	-kPa	
Si08-2	0.60	0.44	0.14	0.31	0.55	0.90	1.40	2.10	3.10	—	—	75	
Si08-3	0.60	0.44	0.10	0.25	0.48	0.80	1.30	2.00	2.90	—	—	75	
Xi10-2	0.50	0.46	0.14	0.30	0.60	1.00	1.60	2.30	3.50	5.30	8.90	94	
Xi10-3	0.50	0.46	0.09	0.26	0.50	0.80	1.50	2.20	3.40	5.20	8.80	94	
Pi12-2	0.314	0.44	0.17	0.32	0.58	1.10	1.80	2.70	4.00	6.40	—	90	
Pi12-3	0.314	0.44	0.08	0.23	0.49	1.00	1.70	2.60	3.90	6.30	—	90	

For performance graphs, see section Vacuum cartridges/integration.

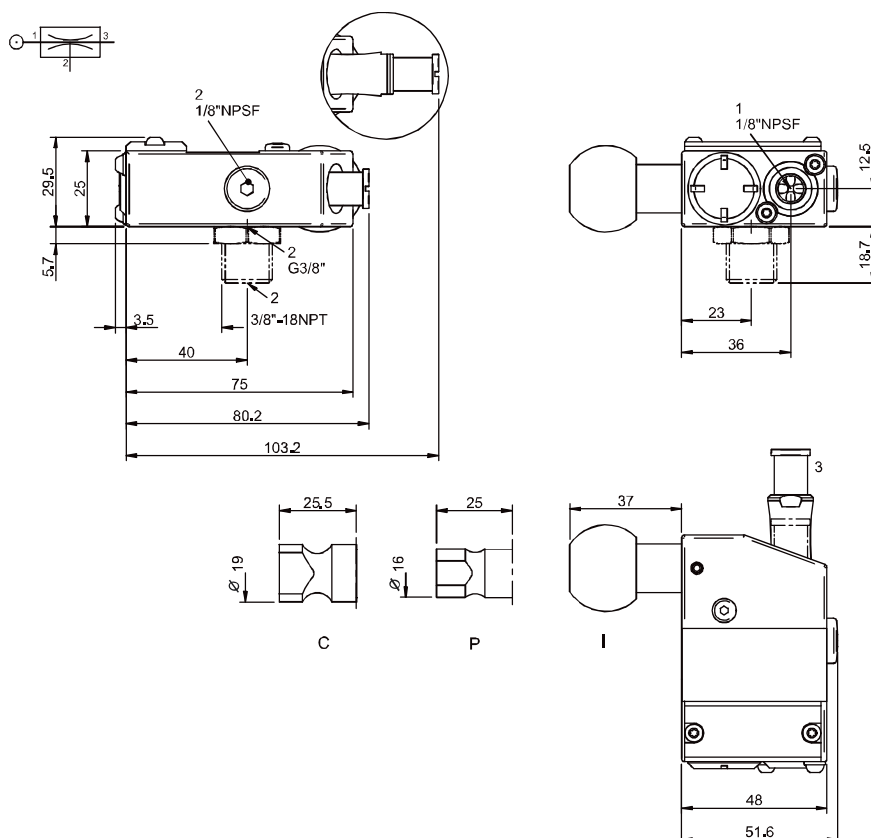
Ordering information

1. Housing	VGS Code
Housing Left hand	00
Housing Right hand	01
2. COAX® cartridge	VGS Code
COAX® cartridge MINI Pi12-2	AB
COAX® cartridge MINI Pi12-3	AC
COAX® cartridge MINI Pi12-2, non-return valve	AD
COAX® cartridge MINI Pi12-3, non-return valve	AE
COAX® cartridge MINI Si08-2	AF
COAX® cartridge MINI Si08-3	AG
COAX® cartridge MINI Si08-3, non-return valve	AI
COAX® cartridge MINI Si08-2, non-return valve	AH
COAX® cartridge MINI Xi10-2	AJ

Combined pump and gripper Medium



2. COAX® cartridge		VGS Code
COAX® cartridge MINI Xi10-3		AK
COAX® cartridge MINI Xi10-2, non-return valve		AL
COAX® cartridge MINI Xi10-3, non-return valve		AM
3. Mounting style		VGS Code
No mounting style		00
P	Mounting Lock pin 16 mm	01
C	Mounting Lock pin 19 mm	02
I	Mounting Ball joint	03
P	Mounting Lock pin 16 mm level compensator	04
C	Mounting Lock pin 19 mm level compensator	05
I	Mounting Ball joint level compensator	06
	Mounting Extrusion mount level compensator	07
	Mounting Profile mount	09
4. Energy saving		VGS Code
No energy saving		AA
piSAVE onoff 65 -kPa		AB
piSAVE onoff, Adjustable (factory set at 45 -kPa)		AC
<i>For detailed information on piSAVE onoff, see separate datasheet.</i>		
5. Release function		VGS Code
Release Blow-off		01
piSAVE release internal		02
piSAVE release external		03
<i>For detailed information on Blow-off and piSAVE release, see separate datasheets.</i>		
6. Vacuum connection		VGS Code
G3/8" female		AA
G3/8" male - 3/8" NPT male adapter		AB
Example		Ordering number
VGST TM 3040 with left hand housing, COAX® cartridge MINI Pi 12-2, mounting lock pin 16mm, no energy saving, release blow-off, G3/8" female vacuum connection		VGS3040 00 AB 01 AA 01 AA



All drawings are of left-handed tooling.

VGS™3040 with profile mount



- ▶ COAX® cartridge integrated.
- ▶ Easy attachment to standard extrusion and profile systems.
- ▶ Adjustable position.
- ▶ Quick setup and change-over.

Technical data

Description	Unit	Value
Feed pressure, max.	MPa	0.7
Noise level, range	dB(A)	65-74
Material		Al, NBR, PA
Temperature range	°C	-10-80
Weight, range	g	225-775

Performance tables

Depending upon choice of COAX® cartridge, performance data of the VGS™3040 can be found in the tables for vacuum flow and evacuation time on the VGS™3040 or Vacuum cartridges/integration datasheets.

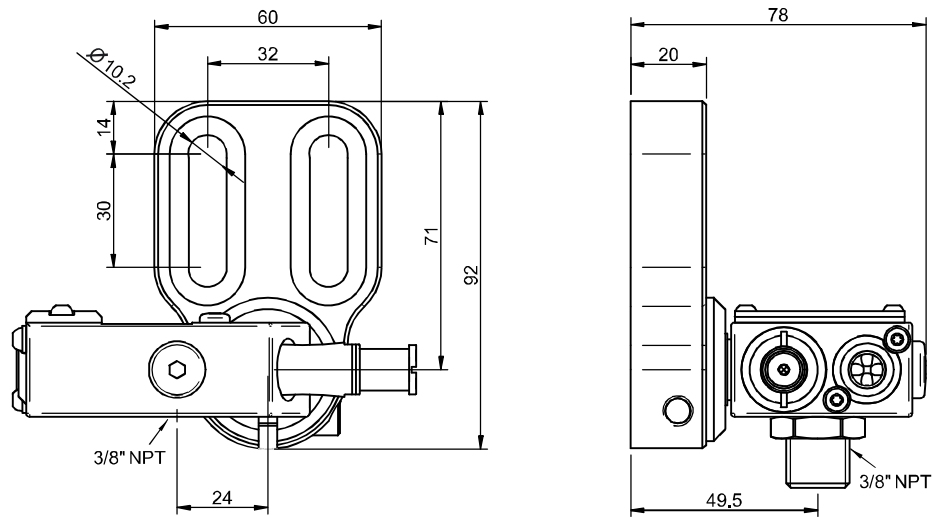
Ordering information

1. Housing	VGS Code
Housing Left hand	00
Housing Right hand	01
2. COAX® cartridge	VGS Code
COAX® cartridge MINI Pi12-2	AB
COAX® cartridge MINI Pi12-3	AC
COAX® cartridge MINI Pi12-2, non-return valve	AD
COAX® cartridge MINI Pi12-3, non-return valve	AE
COAX® cartridge MINI Si08-2	AF
COAX® cartridge MINI Si08-3	AG
COAX® cartridge MINI Si08-3, non-return valve	AI
COAX® cartridge MINI Si08-2, non-return valve	AH
COAX® cartridge MINI Xi10-2	AJ
COAX® cartridge MINI Xi10-3	AK
COAX® cartridge MINI Xi10-2, non-return valve	AL
COAX® cartridge MINI Xi10-3, non-return valve	AM
3. Mounting style	VGS Code
Mounting Profile mount	09
4. Energy saving	VGS Code
No energy saving	AA
piSAVE onoff 65 -kPa	AB
piSAVE onoff, Adjustable (factory set at 45 -kPa)	AC
For detailed information on piSAVE onoff, see separate datasheet.	
5. Release function	VGS Code
Release Blow-off	01
piSAVE release internal	02
piSAVE release external	03
For detailed information on Blow-off and piSAVE release, see separate datasheets.	

Combined pump and gripper Medium



6. Vacuum connection	VGS Code
G3/8" female	AA
G3/8" male - 3/8" NPT male adapter	AB
Example	Ordering number
VGS™3040 with left hand housing, COAX® cartridge MINI Pi 12-2, mounting Profile mount, no energy saving, release blow-off, G3/8" female vacuum connection	VGS3040 00 AB 09 AA 01 AA



All drawings are of left-handed tooling.

VGS™3040 with piSAVE onoff



- ▶ COAX® cartridge integrated.
- ▶ Integrated energy-saving device, piSAVE onoff, results in very low air consumption in sealed applications.
- ▶ Built-in blow off check valve for fast release of object.
- ▶ Available in lock pin 16, 19 or ball joint mountings, industry standard.
- ▶ Available with level compensator to compensate for differences in level of object.

Technical data

Description	Unit	Value
Feed pressure, max.	MPa	0.7
Feed pressure, range	MPa	0.17-0.7
Noise level	dBA	65-74
Material		PA, AI, SS, NBR, PE, TPU, POM, CuZn
Temperature range	°C	0-60
Weight, range	g	279-340
Singal range	-kPa	adjustable/ -65
Function		2/2 NO
Hysteresis	kPa	8

Performance tables

Depending upon choice of COAX® cartridge, performance data of the VGS™3040 can be found in the tables for vacuum flow and evacuation time on the VGS™3040 or COAX® cartridge datasheets.

Ordering information

1. Housing		VGS Code
Housing Left hand		00
Housing Right hand		01
2. COAX® cartridge		VGS Code
COAX® cartridge MINI Pi12-2, non-return valve		AD
COAX® cartridge MINI Pi12-3, non-return valve		AE
COAX® cartridge MINI Si08-3, non-return valve		AI
COAX® cartridge MINI Si08-2, non-return valve		AH
COAX® cartridge MINI Xi10-2, non-return valve		AL
COAX® cartridge MINI Xi10-3, non-return valve		AM
3. Mounting style		VGS Code
No mounting style		00
P	Mounting Lock pin 16 mm	01
C	Mounting Lock pin 19 mm	02
I	Mounting Ball joint	03
P	Mounting Lock pin 16 mm level compensator	04
C	Mounting Lock pin 19 mm level compensator	05
I	Mounting Ball joint level compensator	06
	Mounting Extrusion mount level compensator	07
	Mounting Profile mount	09
4. Energy saving		VGS Code
A	piSAVE onoff 65 -kPa	AB
B	piSAVE onoff, Adjustable (factory set at 45 -kPa)	AC

For detailed information on Profile mount, see separate datasheet.

Combined pump and gripper Medium

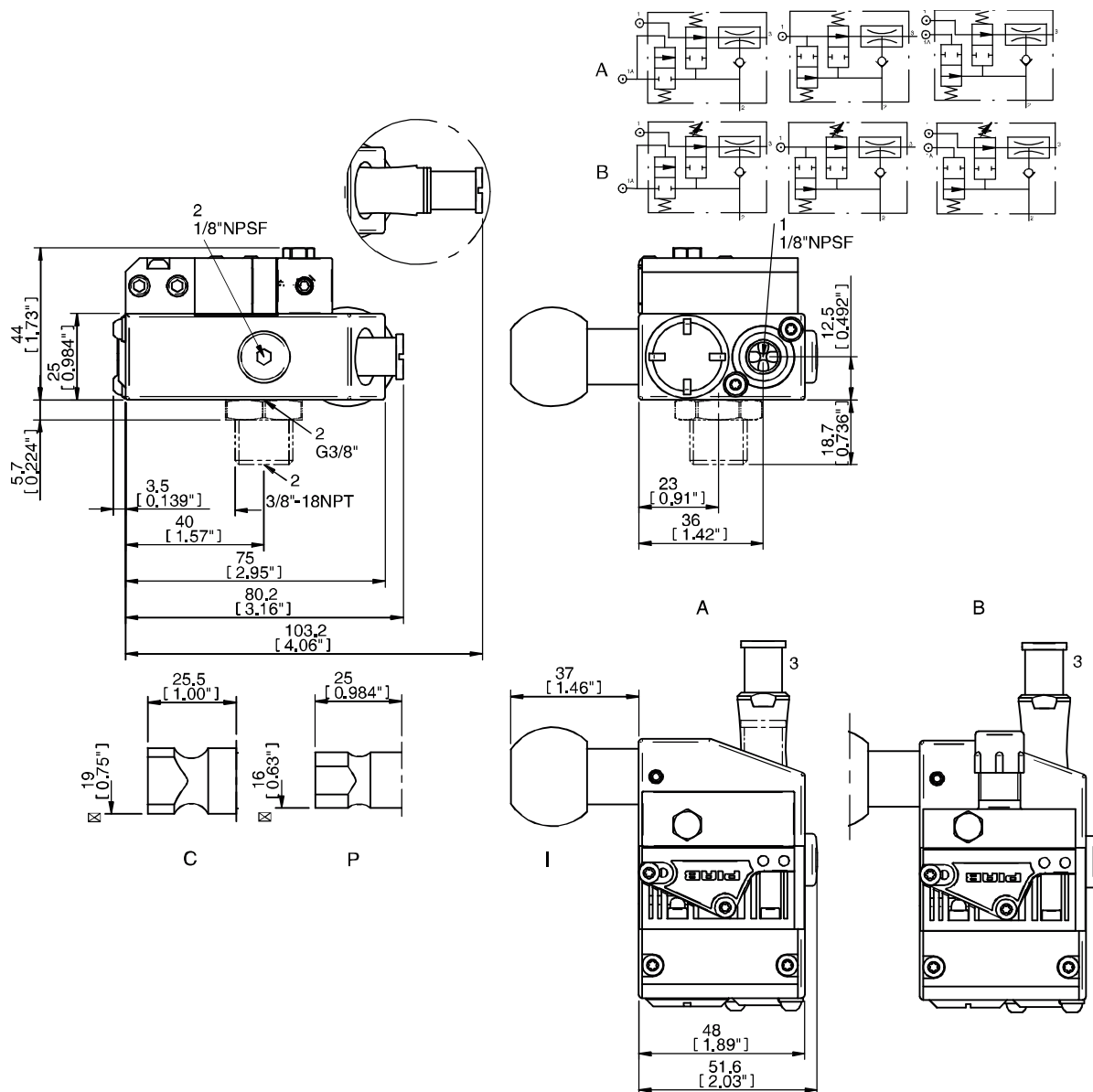


5. Release function	VGS Code
Release Blow-off	01
piSAVE release internal	02
piSAVE release external	03

For detailed information on Blow-off and piSAVE release, see separate datasheets.

6. Vacuum connection	VGS Code
G3/8" female	AA
G3/8" male - 3/8" NPT male adapter	AB

Example	Ordering number
VGST TM 3040 with left hand housing, COAX [®] cartridge MINI Pi 12-2, non-return valve, mounting lock pin 16mm, piSAVE onoff 65 -kPa, release blow-off, G3/8" female vacuum connection	VGS3040 01 AD 01 AB 01 AA



All drawings are of left-handed tooling.

VGS™3040 with piSAVE release



- ▶ COAX® cartridge integrated.
- ▶ Built-in quick release for fast release of object, internal or separate feed.
- ▶ Available in lock pin 16, 19 or ball joint mountings, industry standard.
- ▶ Available with level compensator to compensate for differences in level of object.

Technical data

Description	Unit	Value
Feed pressure, max.	MPa	0.7
Feed pressure, range	MPa	0.3-0.7
Noise level, range	dBA	65-74
Material		Al, NBR, PA, SS
Temperature range	°C	0-50
Weight, range	g	221-282
Flow, atmospheric, average	l/s	7.85

Performance tables

Depending upon choice of COAX® cartridge, performance data of the VGS™3040 can be found in the tables for vacuum flow and evacuation time on the VGS™3040 or Vacuum cartridges/integration datasheets.

Ordering information

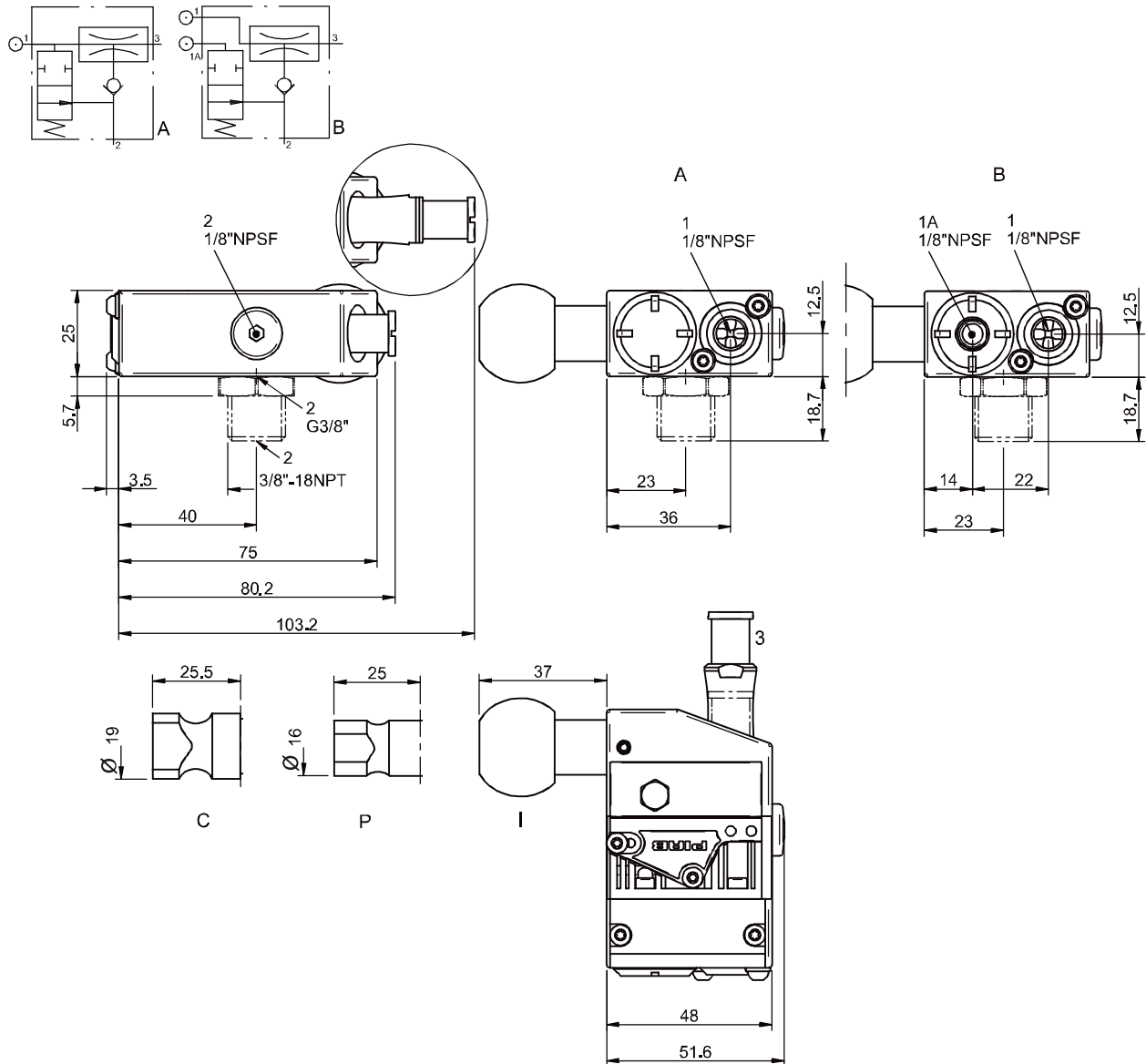
1. Housing		VGS Code
Housing Left hand		00
Housing Right hand		01
2. COAX® cartridge		VGS Code
COAX® cartridge MINI Pi12-2		AB
COAX® cartridge MINI Pi12-3		AC
COAX® cartridge MINI Pi12-2, non-return valve		AD
COAX® cartridge MINI Pi12-3, non-return valve		AE
COAX® cartridge MINI Si08-2		AF
COAX® cartridge MINI Si08-3		AG
COAX® cartridge MINI Si08-3, non-return valve		AI
COAX® cartridge MINI Si08-2, non-return valve		AH
COAX® cartridge MINI Xi10-2		AJ
COAX® cartridge MINI Xi10-3		AK
COAX® cartridge MINI Xi10-2, non-return valve		AL
COAX® cartridge MINI Xi10-3, non-return valve		AM
3. Mounting style		VGS Code
No mounting style		00
P	Mounting Lock pin 16 mm	01
C	Mounting Lock pin 19 mm	02
I	Mounting Ball joint	03
P	Mounting Lock pin 16 mm level compensator	04
C	Mounting Lock pin 19 mm level compensator	05
I	Mounting Ball joint level compensator	06
	Mounting Extrusion mount level compensator	07
	Mounting Profile mount	09
4. Energy saving		VGS Code
No energy saving		AA
piSAVE onoff 65 -kPa		AB
piSAVE onoff, Adjustable (factory set at 45 -kPa)		AC

For detailed information on piSAVE onoff, see separate datasheet.

Combined pump and gripper Medium



5. Release function		VGS Code
A	piSAVE release internal	02
B	piSAVE release external	03
6. Vacuum connection		VGS Code
G3/8" female		AA
G3/8" male - 3/8" NPT male adapter		AB
Example		Ordering number
VGST TM 3040 with left hand housing, COAX [®] cartridge MINI Pi 12-2, mounting lock pin 16mm, no energy saving, piSAVE release internal, G3/8" female vacuum connection		VGS3040 01 AB 01 AA 02 AA



All drawings are of left-handed tooling.

VGS™3040 with blow-off



- ▶ COAX® cartridge integrated.
- ▶ Built-in blow off check valve for fast release of object.
- ▶ Available in lock pin 16, 19 or ball joint mountings, industry standard.
- ▶ Available with level compensator to compensate for differences in level of object.

Technical data

Description	Unit	Value
Feed pressure, max.	MPa	0.7
Feed pressure, range	MPa	0.3-0.7
Feed pressure, min.	MPa	0.1
Noise level, range	dBA	65-74
Material		Al, NBR, PA, SS, CuZn
Temperature range	°C	-10-80
Weight, range	g	223-284
Flow, rate of 0-0.7 MPa	l/s	1.5-2.8

Performance tables

Depending upon choice of COAX® cartridge, performance data of the VGS™3040 can be found in the tables for vacuum flow and evacuation time on the VGS™3040 or Vacuum cartridges/integration datasheets.

Ordering information

1. Housing		VGS Code
Housing Left hand		00
Housing Right hand		01
2. COAX® cartridge		VGS Code
COAX® cartridge MINI Pi12-2		AB
COAX® cartridge MINI Pi12-3		AC
COAX® cartridge MINI Pi12-2, non-return valve		AD
COAX® cartridge MINI Pi12-3, non-return valve		AE
COAX® cartridge MINI Si08-2		AF
COAX® cartridge MINI Si08-3		AG
COAX® cartridge MINI Si08-3, non-return valve		AI
COAX® cartridge MINI Si08-2, non-return valve		AH
COAX® cartridge MINI Xi10-2		AJ
COAX® cartridge MINI Xi10-3		AK
COAX® cartridge MINI Xi10-2, non-return valve		AL
COAX® cartridge MINI Xi10-3, non-return valve		AM
3. Mounting style		VGS Code
No mounting style		00
P	Mounting Lock pin 16 mm	01
C	Mounting Lock pin 19 mm	02
I	Mounting Ball joint	03
P	Mounting Lock pin 16 mm level compensator	04
C	Mounting Lock pin 19 mm level compensator	05
I	Mounting Ball joint level compensator	06
	Mounting Extrusion mount level compensator	07
	Mounting Profile mount	09

Combined pump and gripper Medium



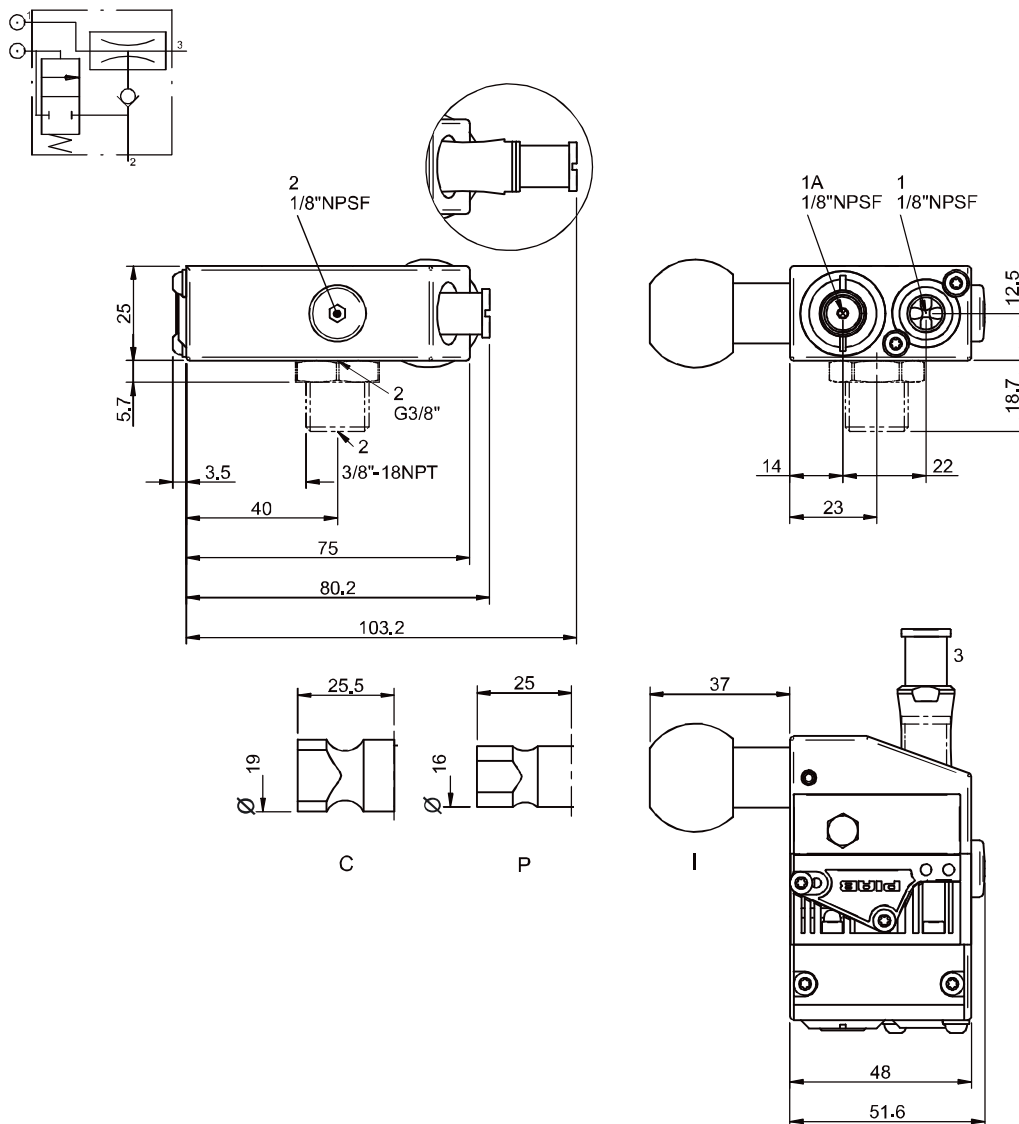
4. Energy saving	VGS Code
No energy saving	AA
piSAVE onoff 65 -kPa	AB
piSAVE onoff, Adjustable (factory set at 45 -kPa)	AC

For detailed information on piSAVE onoff, see separate datasheet.

5. Release function	VGS Code
Release Blow-off	01

6. Vacuum connection	VGS Code
G3/8" female	AA
G3/8" male - 3/8" NPT male adapter	AB

Example	Ordering number
VGST TM 3040 with left hand housing, COAX [®] cartridge MINI Pi 12-2, mounting lock pin 16mm, no energy saving, release Blow-off, G3/8" female vacuum connection	VGS3040 01 AB 01 AA 01 AA



All drawings are of left-handed tooling.

VGS™5010



Dimension and connection				W mm	D mm	H mm	Feed pressure mm	Vacuum	Exhaust/blow mm
1	Housing		VGS5010		33	45 ^a	Ø8 mm, 3x G1/4", G1/8"		
2	COAX® cartridge	2:1	No COAX® cartridge	110					
		2:2	COAX® cartridge 2-stage	153					Ø19 mm
		2:3	COAX® cartridge 3-stage	199					Ø19 mm
3	Mounting / orientation	3:1	4 x M6 top, flush mount					2x G1/4"	
		3:2	4 x M6 top, angle bracket		b	b		2x G1/4"	
		3:3	M12 20 mm		20	20		2x G1/4"	
		3:4	M12 20 mm, angle bracket		b	b		2x G1/4"	
4	Suction cup		No suction cup	c	c	c		G1/2"	
			Suction cup						

For complete dimensions add the measurements from all selected modules or visit www.piab.com and download your configuration at the CAD download centre.

^a For suction cups with G3/8" thread connection add an extra 5 mm to account for the bushing.

^b For complete dimensions, configure your CAD model at www.piab.com

^c For suction cup dimensions see suction cup data sheet.

Combined pump and gripper Large






Technical data

Description	Unit	Value
Feed pressure, max.	MPa	0.7
Noise level	dBA	73–83
Temperature range	°C	10–50
Material		Al, SS, NBR, PA, PP, PU

For more technical information about the COAX® cartridges, please go to the data sheet for the COAX® cartridge MIDI.

Ordering information

1. Select housing	VGS™5010 code
Housing	VGS5010

	2. Select COAX® cartridge module	Initial flow NI/s	Evacuation time to reach 60 -kPa s/l	Description	VGS™5010 code
				No COAX® cartridge (slave unit)	AA
a	Pi 	2.8	0.7	COAX® cartridge MIDI Pi48-2	AB
c		2.8	0.7	COAX® cartridge MIDI Pi48-2, non-return valve	AD
b		5.6	0.7	COAX® cartridge MIDI Pi48-3	AC
d		5.6	0.7	COAX® cartridge MIDI Pi48-3, non-return valve	AE
a	Si 	3.3	0.53	COAX® cartridge MIDI Si32-2	AF
c		3.3	0.53	COAX® cartridge MIDI Si32-2, non-return valve	AH
b		6.0	0.53	COAX® cartridge MIDI Si32-3	AG
d		6.0	0.53	COAX® cartridge MIDI Si32-3, non-return valve	AI
a	Xi 	2.8	0.63	COAX® cartridge MIDI Xi40-2	AJ
c		2.8	0.63	COAX® cartridge MIDI Xi40-2, non-return valve	AL
b		5.9	0.57	COAX® cartridge MIDI Xi40-3	AK
d		5.9	0.57	COAX® cartridge MIDI Xi40-3, non-return valve	AM

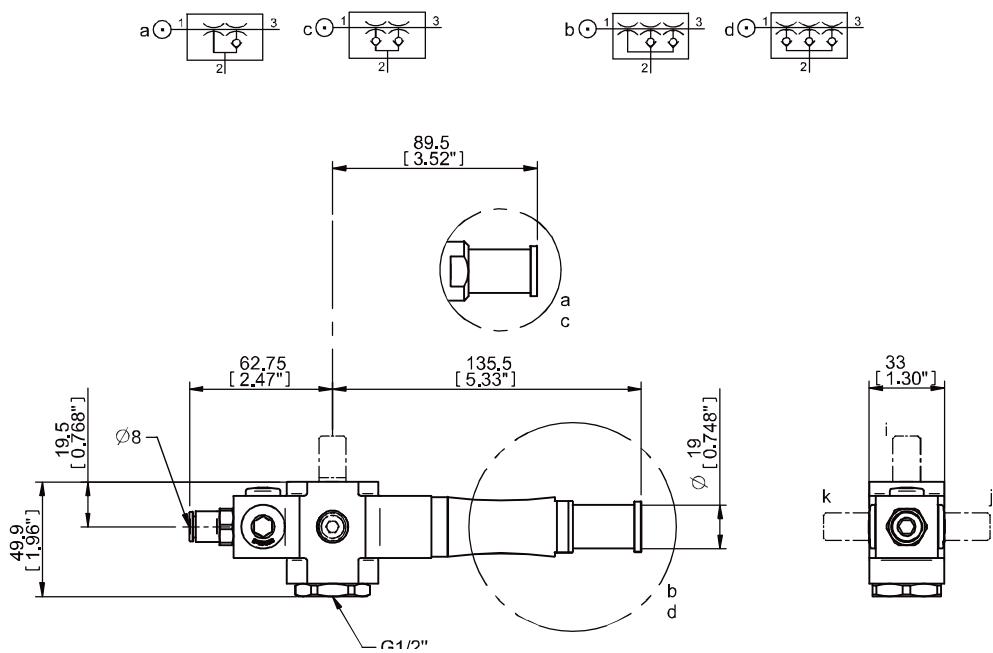
	3. Select mounting/orientation	VGS™5010 code
	4x M6 top, flush mount	00
	4x M6 top, angle bracket	01
i	M12 20 mm top	02
j	M12 20 mm right	03
k	M12 20 mm left	04
i	M12 20 mm top, angle bracket	05
j	M12 20 mm right, angle bracket	06
k	M12 20 mm left, angle bracket	07

	4. Select suction cup with fitting	VGS™5010 code
	No suction cup	BA
	BF110P 30°/60° Shore A	CO
	BF110P 60° Shore A	CP
	BL50-3P 30°/70° Shore A	CX
	BX75P 30°/60° Shore A	CY
	BX75P 60° Shore A	CZ
	BX110P 30°/60° Shore A	CQ
	BX110P 60° Shore A	CR
	F110P 30°/60° Shore A	CS
	F110P 60° Shore A	CT
	OB65x170P 30°/60° Shore A	CU
	OB65x170P 60° Shore A	CV

Combined pump and gripper Large



Example	Ordering number
VGS™5010 BF110P – Pi48-2, M12 20 mm top, BF110P 30/60° Shore A	VGS5010.AB.02.CO



VGS™2010 mounting-kits



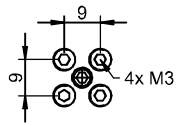
- ▶ Easy attachment to standard extrusion and profile systems
- ▶ Flexible positioning
- ▶ Quick setup and change-over
- ▶ Durable and non-rotating installation

Technical data

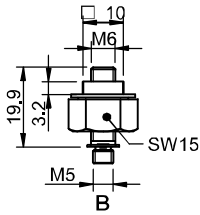
Description	Unit	Value	
		0114097	0114098
Material		SS, PA, NBR	Al, SS, Steel, PA, NBR
Weight	g	4.1	13.1

Ordering information

Description		Art. No.
A	4x M3 top, flush mount	0114097
B	M6 19 mm top, profile kit	0114098



A



B

VGS™3010 mounting-kits



- Fits standard robot end-of-arm tooling interfaces.
- Easy attachment to standard extrusion and profile systems.
- Flexible positioning.
- Quick setup and change-over.
- Durable and non-rotating installation.

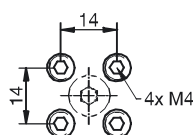
Technical data, specific

Description	Unit	Value				
		0106915	0106927	0106949	0108488	0108731
Material		SS, NBR	SS, PA, NBR	Al, SS, Steel, NBR	Al, SS, Steel, NBR	AL, SS, NBR
Weight	g	24	24	36	22	46

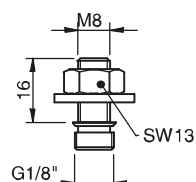
Ordering information

	Description	Art. No.
A	4x M4 top, flush mount	0106915
B	M8 16 mm	0106927
C	M8 27 mm, profile kit	0106949
D	M6 22 mm, profile kit	0108488
E	Ball joint VGS™3010	0108731

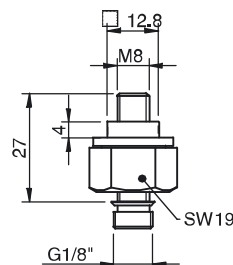
B-D 4x plug G1/8" included.



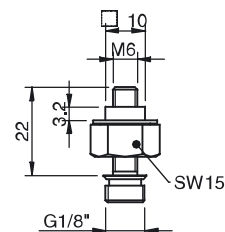
A



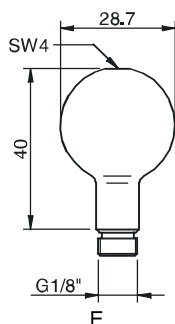
B



C



D



E

VGS™5010 mounting-kits



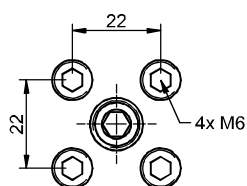
- ▶ Easy attachment to standard extrusion and profile systems
- ▶ Flexible positioning
- ▶ Quick setup and change-over
- ▶ Durable and non-rotating installation

Technical data

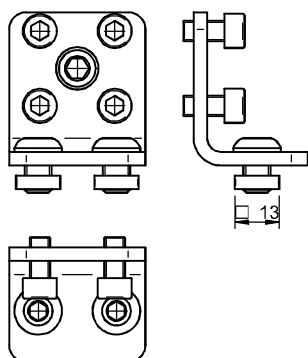
Description	Unit	Value			
		0114162	0114163	0114164	0114152
Material		Al, SS, PA, NBR	Al, SS, Steel, PA, NBR	SS, Steel, PA, NBR	SS, Steel, PA, NBR
Weight	g	34.8	133.1	58.7	154.1

Ordering information

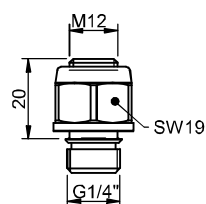
Description		Art. No.
A	4x M6 top, flush mount	0114162
B	4x M6 top, angle bracket	0114163
C	M12 20 mm top	0114164
D	M12 20 mm top, angle bracket	0114152



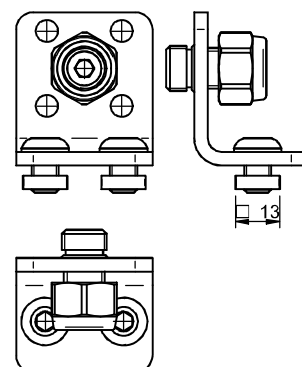
A



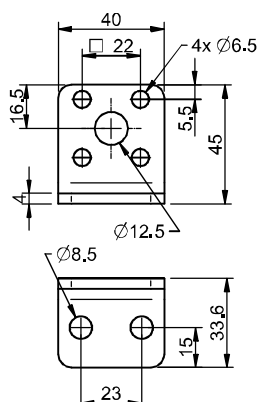
B



C



D



Angle bracket included in B & D