

piGRAB kit



- ▶ Vacuum activated gripper/grabber, suitable for gentle and compliant gripping operations as well as locking/holding.
- ▶ Introduction kits - includes several options for arms and end-effector fingers.
- ▶ Suction cup with G1/8" male can be used as an end-effector finger. The enclosed flow-restrictor must be used in the arm when a cup is used.
- ▶ Available for individual vacuum source, such as Piab's VGS™3010, or a centralized vacuum source.
- ▶ Easy to fine-tune the gripping torque/force by controlling the vacuum level. piSAVE optimize and piSAVE on/off are products for vacuum level control.
- ▶ Application examples: Vision guided Bin-picking, pallet lifting, gentle handling of parts such as glass, fruits, etc.

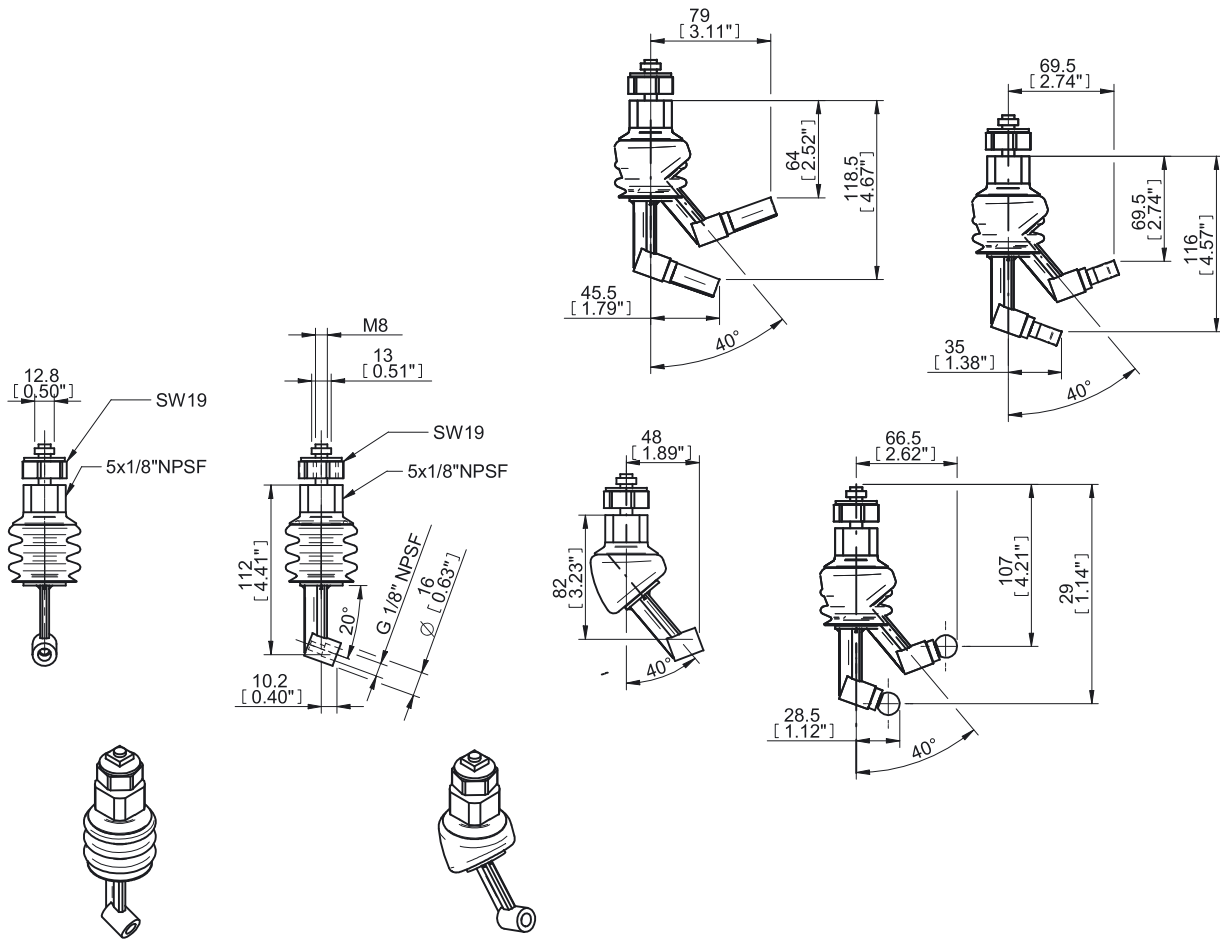
Technical data

Description	Unit	Value
Feed pressure, max.	MPa	Atm. pressure
Vacuum	-kPa	Operating range min. 101.3
Material		POM, PA, TPU, SS, AI, NBR
Temperature range	° C	-20-80
Weight	g	84.6
Volume	cm ³	20
Connection, centralized vacuum source		5x1/8" NPSF, Top profile kit M8 27 mm
Connection, decentralized vacuum source		G3/8" male
Max. load at 60 -kPa, tangential force at 30° actuation	kg	0.9
Action range	°	40 ±1.5
Accuracy, non actuated	°	0-7
Accuracy, actuated	°	40 ±1.5
Life span	cycles	5 million
Vacuum flow at 10 -kPa (when cup is used with end-effector finger)	NI/s	Straight arm = 0.28 / Elbow arm = 0.73
Bore-through diameter	mm	Straight = 3.07 / Elbow = 4.7

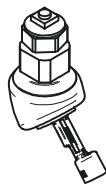
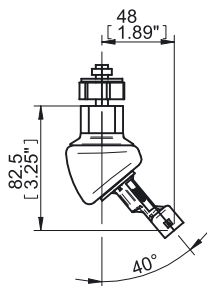
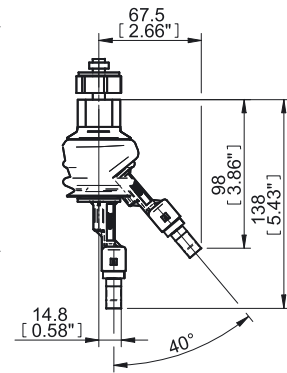
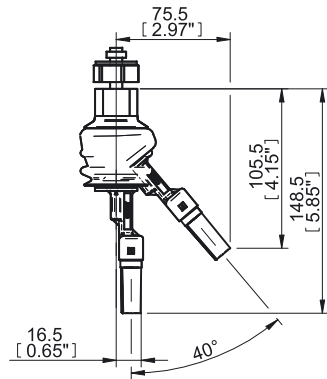
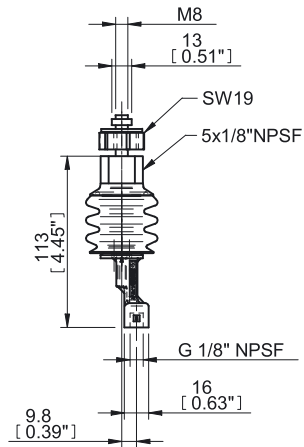
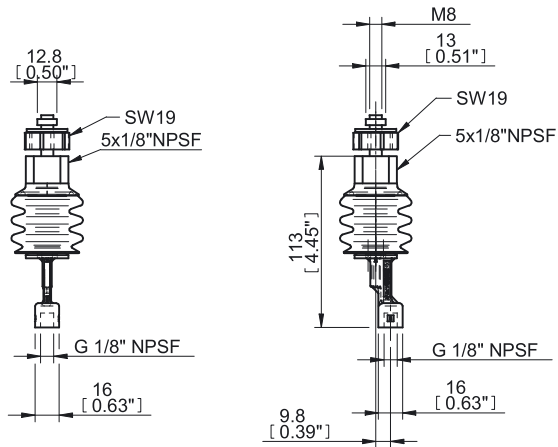
Ordering information

	Description	Art. No.
A	piGRAB kit with fitting 5x1/8" NPSF	0128756
B	piGRAB kit with fitting G3/8" male	0129044

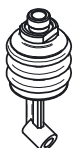
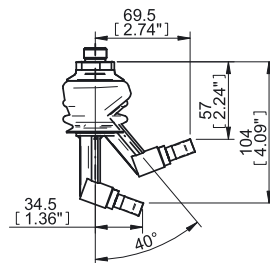
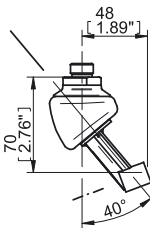
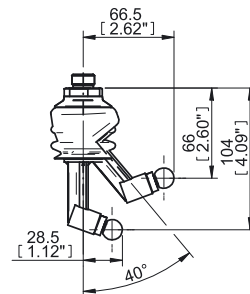
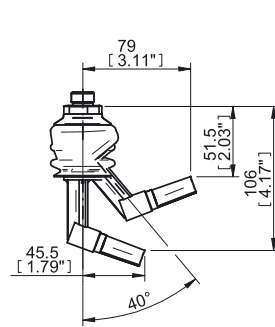
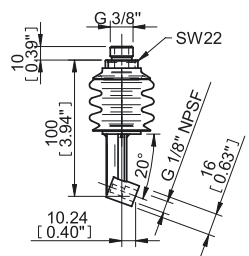
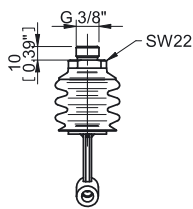
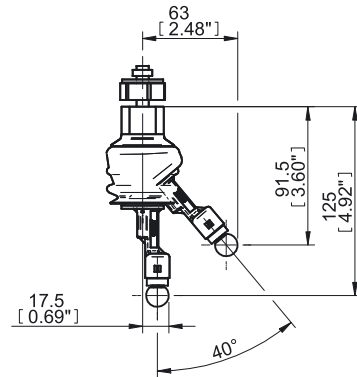
piGRAB kits are assembled with elbow arm. Straight arm and end-effector fingers are included.



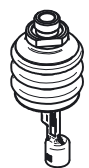
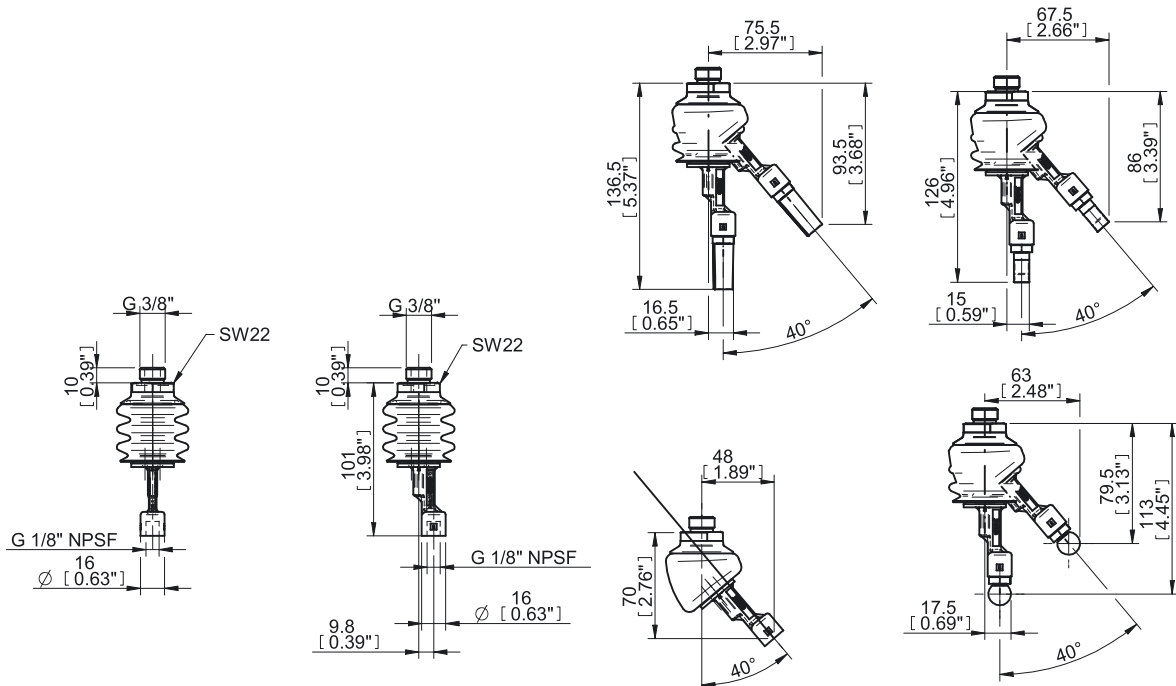
A



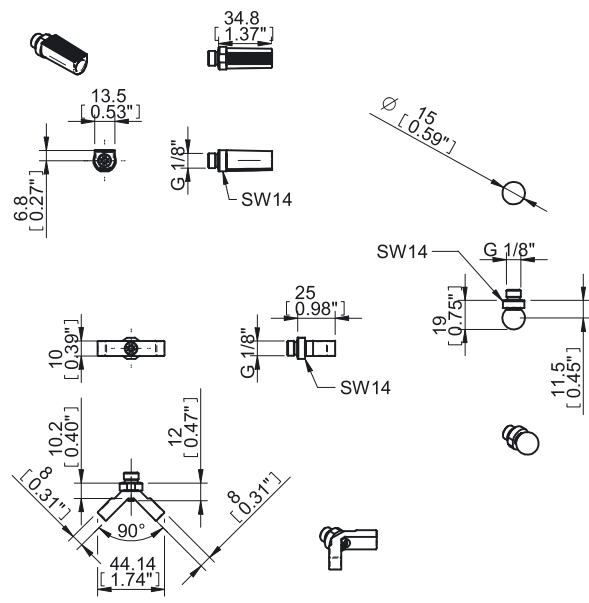
A



B



B



End-effector fingers