



Analog timer

P992364

PRESENTATION:

The analog timer is a plug-on controller specially design for drain valves. The draining time can be set with the "ON" trimmer between 0.5 and 10 seconds. The "OFF" trimmer allows to adjust the delay time between two draining cycles from 0.5 to 45 minutes. The unit is ready to control the valve as soon as the power is switched on. The ON/OFF sequence will be repeated so long as the unit is fed. Two LEDs indicate the output status. A "TEST" button is provided to check the cycle settings and to restart the control sequence from the output status "ON".

USE:

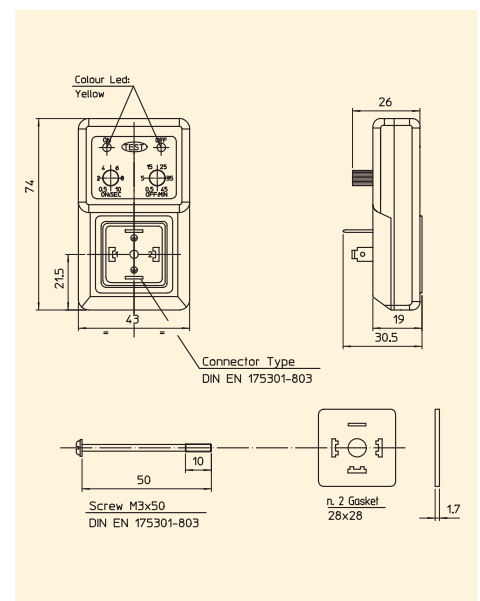
Condensate drain systems control
Timed systems.

TECHNICAL DATA:

Supply voltage:	24 to 240V AC/DC $\pm 10\%$ 50/60Hz
Current consumption	4mA Max.
Operating temperature	-10°C +50°C
Environmental protection	assembled IP 65, NEMA IV
Switch capacity	1 Amp
Inrush current	10 Amps for 10mSec.
Duty cycles	100%
Repeat accuracy	$\pm 1\%$
Scale accuracy	$\pm 10\%$
Reset/test	Manual touch switch
Printed circuit board	UL 94V-0
Connection	EN 175301-803
On time	0.5 to 10 seconds
Off time	0.5 to 45 minutes
Indicators	Led
Design standard	DIN EN 60664-1;VDE 0110-1
Approvals	EAC (Eurasian Customs Union) UL Recognized

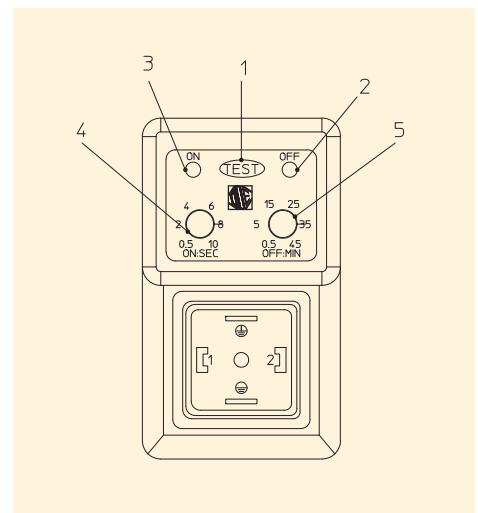


DIMENSIONS:



DESCRIPTION:

- | | |
|-----------------------------|-----------------------|
| 1. Test button | |
| 2. Yellow Led: | output power "OFF" |
| 3. Yellow Led: | output power "ON" |
| 4. Trimmer "ON": regulation | time "ON" |
| 5. Trimmer "OFF": pause | time regulation "OFF" |



Note

The timer is supplied with a n. 2 seals and a locking screw.

The "ODE" reserves the right to carry out technical and aesthetic modifications without prior notification.



PRESENTATION:

The digital timer is a plug-on controller specially design for Solenoid valves. The unit offers an easy time cycle programming. The switching time can be set with the "ON" touch between 0 and 99 seconds. The "OFF" touch allows to adjust the delay time between two switching cycles from 0 to 99 minutes. The unit is ready to control the valve as soon as the power is switched on. The ON/OFF sequence will be repeated so long as the unit is powered. Two LEDS indicate the output status. A "TEST" button is provided to check the cycle settings and to restart the control sequence from the output status "ON". Compared to analog solution it offers higher precision 'high. Through the display you can see the set times.

USE:

Condensate drain systems control
Timed systems.

TECHNICAL DETAILED:

Supply voltage: 24 to 240V AC/DC±10% 50/60Hz
Output voltage: same as supply voltage
Load current: 1A max
Standby current: 4 mA max
Operating temp. range: - 40°C to + 60°C
Connector: EN 175301-803 / ISO 4400
Environmental protection: IP65 (assembled with delivered gaskets)
Housing dimensions: 86 x 44 x 20,5mm
Off time: from 0 to 9,5 min., step 0,5 min.
 from 10 min. to 99 min., step 1 min.
On time: from 0s to 9,5s., step 0,5s.
 from 10s to 99s., step 1s.
Repeat accuracy: ± 0,01%
Indicators: Green LED - Off phase
 Red LED - On phase

MATERIALS:

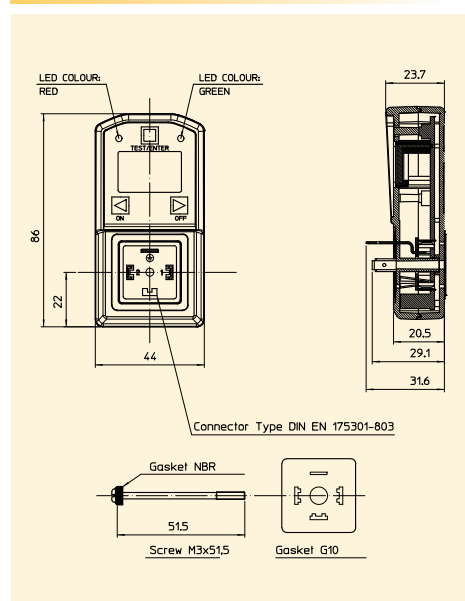
Housing: ABS V0
Gasket:NBR(nitrile)

ACCESSORIES:

Connectors for S.V. (to be order separately)
Pg 9 (6÷8mm) or Pg 11(8÷10mm)

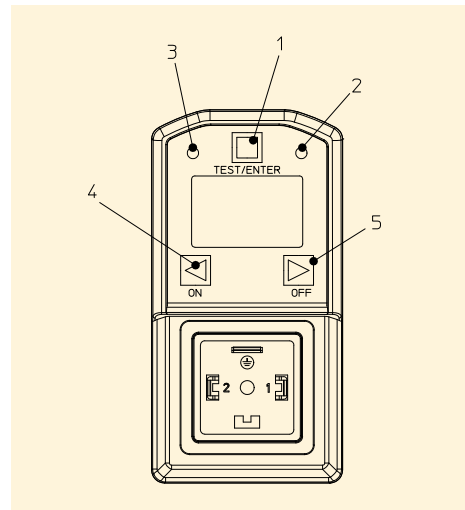


DIMENSIONS:



DESCRIPTION:

- | | |
|-----------------------------|-----------------------------|
| 1. Push-button TEST | |
| 2. Green Led not supplied : | output power absent (OFF) |
| 3. Red Led load supplied : | output power present (ON) |
| 4. Touch "ON": | regulation time "ON" |
| 5. Touch "OFF": | pause time regulation "OFF" |



The "ODE " reserves the right to carry out technical and aesthetic modifications without prior notification.